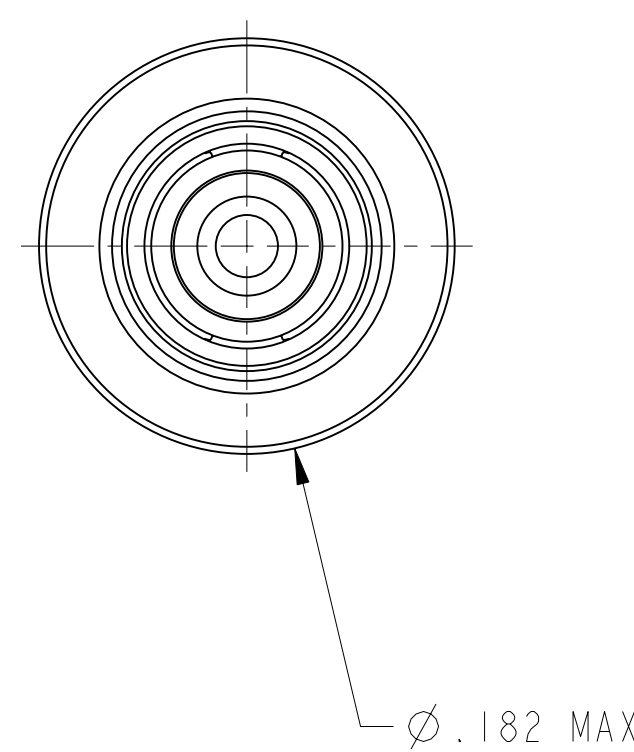
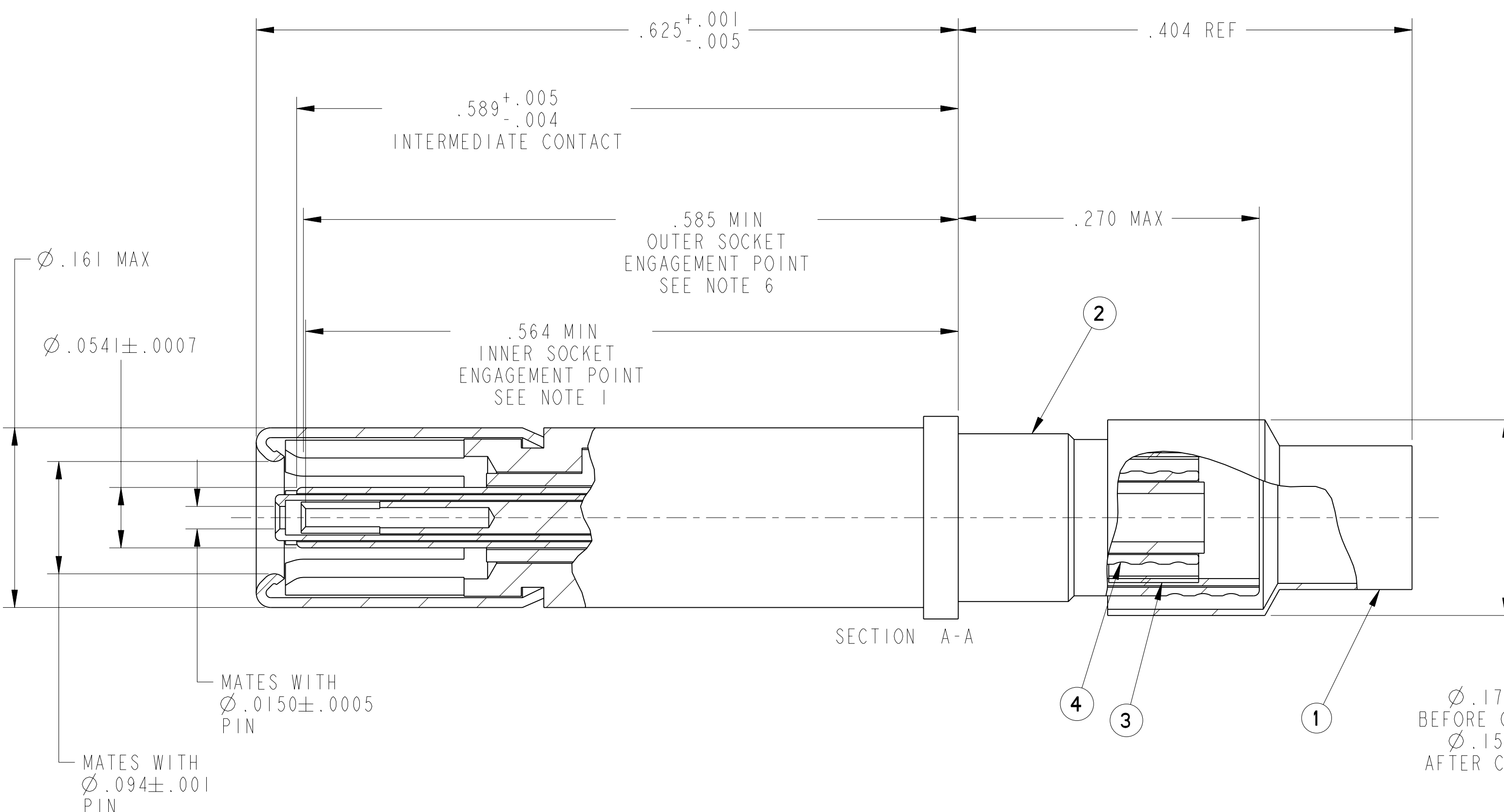


REV. A	SHEET 1 OF 1	DOCUMENT NO. 21-033908-081
REVISIONS		
LTR	DESCRIPTION	DATE
A	INITIAL RELEASE	



21-033908-081

SHEET 1 OF 1

REV. A

C

B

A

- 6. INDICATED DIMENSION IS FROM THE REAR OF THE OUTER CONTACT SHOULDER TO THE POINT AT WHICH A  $\phi .0940 \pm .0002$  SQUARE ENDED PIN ENGAGES THE OUTER SOCKET CONTACT SPRING.
- 5. MATES WITH TWINAX & TRIAX PIN CONTACTS 21-33909-XX (JN1104\*75T INTERFACE).
- 4. TERMINATES TWINAX CABLES 5PTMIT04-1 OR EQUIVALENT.
- 3. INDICATED COMPONENT IS NOT ILLUSTRATED. COMPLETE INSTALLATION INSTRUCTIONS PACKAGED WITH EACH ASSEMBLY. PACKAGE PER PRODUCTION PROCESS SHEET.
- 2. PROCESS SPEC:  
TEST 9-5272-36
- 1. INDICATED DIMENSION IS FROM THE REAR OF THE OUTER CONTACT SHOULDER TO THE POINT AT WHICH A  $\phi .0150 \pm .0002$  SQUARE ENDED PIN ENGAGES THE INNER SOCKET CONTACT SPRING.

NOTES:

THE USE OF THIS DOCUMENT IS UNLIMITED. HOWEVER, DOCUMENTS REFERENCED HEREON MAY CONTAIN LIMITED RIGHTS DATA.

N/A  
NEXT ASSEMBLY

PRO/ENGINEER INFORMATION  
 Pro/e Model Used:  
 21-033908-081.ASSEM  
 Drawing Name:  
 21-33908-81

UNLESS OTHERWISE SPECIFIED

SPECIFICATIONS

LINER DIMENSIONS ARE IN INCHES  
 TOLERANCES:  
 .XXXX =  $\pm .0005$  ANGLES =  $\pm 2^\circ$   
 .XXX =  $\pm .010$   
 .XX =  $\pm .03$   
 .X =  $\pm .1$

DIM. & TOL. PER ASME Y14.5M;  
 DRM PER MIL-DTL-31000;  
 OTHER Amphenol Stds. PER 9-3800

LEGENDS:  
 = FLAG NOTE CALL OUT REFERENCE ONLY

MATERIAL SPEC.  
N/A

PROCESS SPEC.  
SEE NOTE 2

POS	QTY	PART NUMBER	DESCRIPTION	NOTE
5	1	L-2092-AB	INSTALLATION INSTRUCTIONS	3
4	1	21-033628-871	INNER CONTACT ASSEMBLY	
3	1	21-033628-051	FERRULE, INTERMEDIATE	
2	1	21-033750-004	OUTER CONTACT ASSEMBLY	
1	1	21-033765-005	FERRULE, OUTER	

APPROVALS	DATE
PREPARED BY: DJSMITH	
ENGINEER IN CHARGE: LRATCHFORD	20-Feb-07
DESIGN MANAGER: HJOHNSON	
DESIGN ACTIVITY GROUP: MIL AERO DEVELOP	

PARTS LIST

**AMPHENOL CORPORATION**  
 40-60 DELAWARE AVENUE  
 SIDNEY, N.Y. 13858

**CONTACT, SOCKET, TWINAX,  
 ELECTRICAL CONNECTOR,  
 TYPE LJT-R, SIZE 12**

SIZE C	CAGE CODE 77820	DOCUMENT NO. 21-033908-081	REV. A
SCALE: 12.0	REF. 21-33908-25	SHEET 1 OF 1	

FORMAT: C-U-E-1

21-033908-081

SHEET 1 OF 1

REV. A

C

B

A

21-033908-081