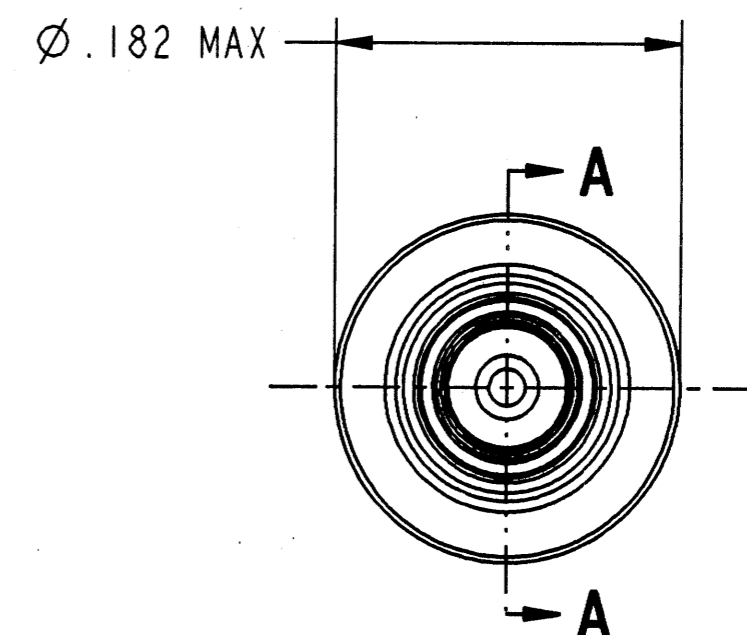
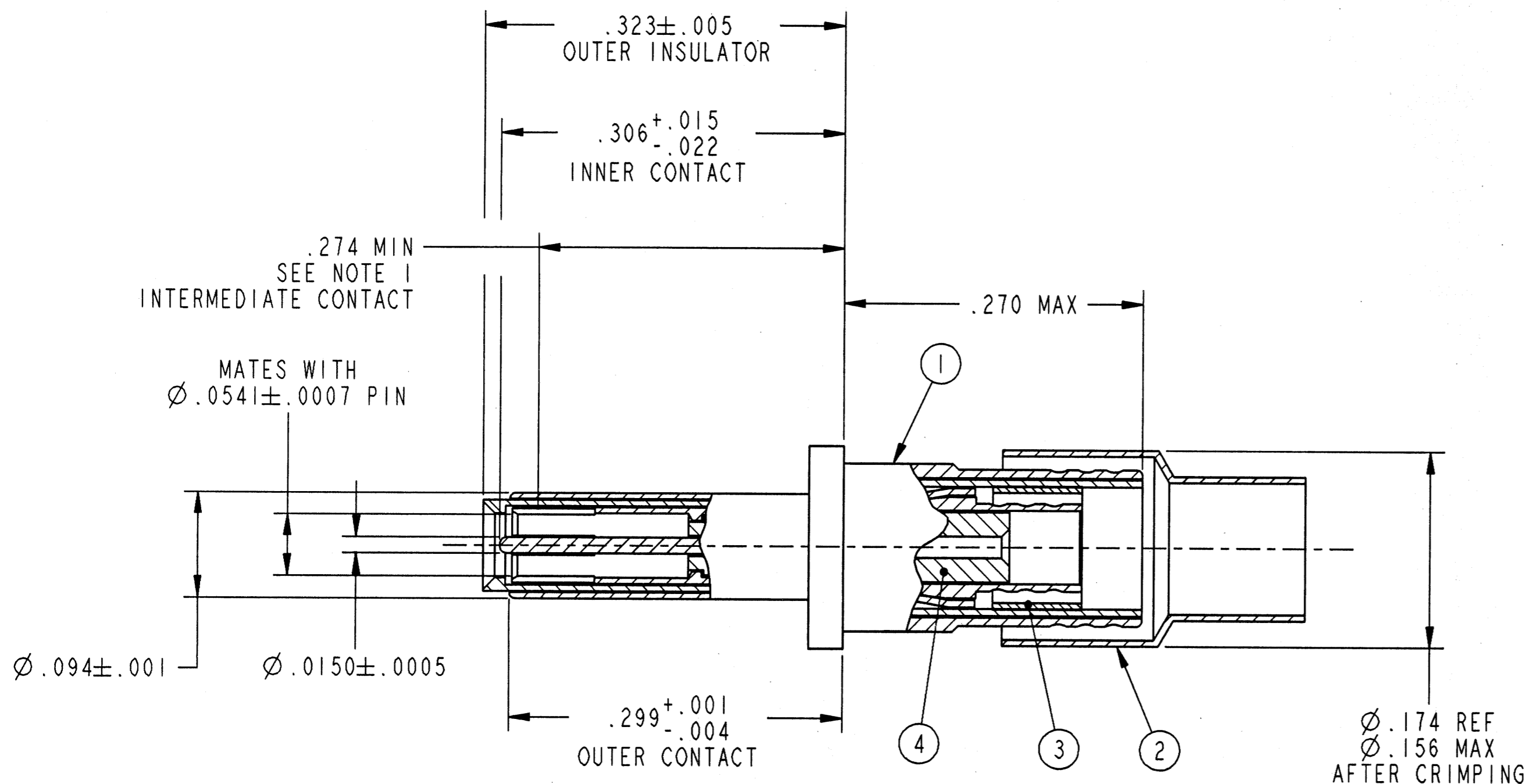
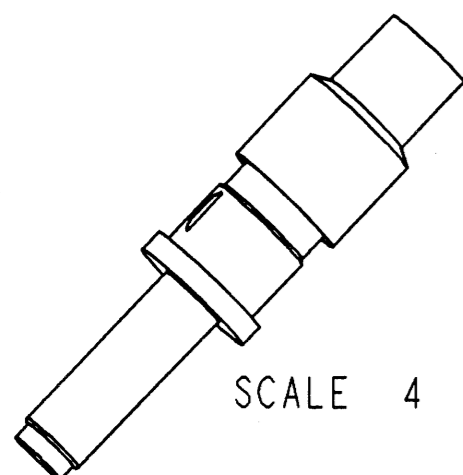


REVISIONS			
LTR	DESCRIPTION	DATE	APPVD
A	INITIAL RELEASE NUM: 213399-453		



- 5. MATES WITH TRIAXIAL PIN CONTACT 21-33908-12
- 4. THIS CONTACT ACCOMMODATES TRIAXIAL CABLE JN1088WU.
- 3. INDICATED COMPONENT IS NOT ILLUSTRATED. COMPLETE INSTALLATION INSTRUCTIONS PACKAGED WITH EACH ASSEMBLY. PACKAGE PER PRODUCTION PROCESS SHEET.
- 2. PROCESS SPEC:  
TEST 9-5272-36
- 1. INDICATED DIMENSION IS FROM THE REAR OF THE OUTER PIN SHOULDER TO THE POINT AT WHICH A Ø.0541 ± .0002 SQUARE ENDED PIN ENGAGES THE INTERMEDIATE SOCKET CONTACT SPRING.

SECTION A-A

NOTES:

THE USE OF THIS DOCUMENT IS UNLIMITED. HOWEVER, DOCUMENTS REFERENCED HEREON MAY CONTAIN LIMITED RIGHTS DATA.

POS	QTY	PART NUMBER	DESCRIPTION	NOTE
5	1	21-33766-5	INSTALLATION INSTRUCTIONS	3
4	1	21-33763-5	INNER CONTACT ASSEMBLY	
3	1	21-33765-6	FERRULE, INTERMEDIATE	
2	1	21-33765-5	FERRULE, OUTER	
1	1	21-33751-3	OUTER CONTACT ASSEMBLY	

UNLESS OTHERWISE SPECIFIED	SPECIFICATIONS	PARTS LIST			
LINEAR DIMENSIONS ARE IN INCHES TOLERANCES: .XXXX = ±.0005 .XXX = ±.010 .XX = ±.03 .X = ±.1 ANGLES = ±2° OTHER STANDARDS PER 9-3800 AND DOD-D-1000 THIRD ANGLE PROJECTION	MATERIAL SPEC. N/A	APPROVALS		DATE	<b>AMPHENOL CORPORATION</b> <small>BENDIX CONNECTOR OPERATIONS            SIDNEY, N.Y.</small> CONTACT, PIN, TRIAXIAL, ELECTRICAL CONNECTOR, TYPE JT-R, SIZE 12
	PROCESS SPEC. SEE NOTE 2	PREPARED: G. LARSON CHECKED: <i>[Signature]</i> MATERIAL: <i>[Signature]</i> APPROVED: <i>[Signature]</i> DATE: 12-10-98		12-10-98	
		SIZE	FSCM NO.	DOCUMENT NO.	REV.
		C	77820	21-33909-12	A
		SCALE: 10.0	REF: 21-33909-1	SHEET 1 OF 1	