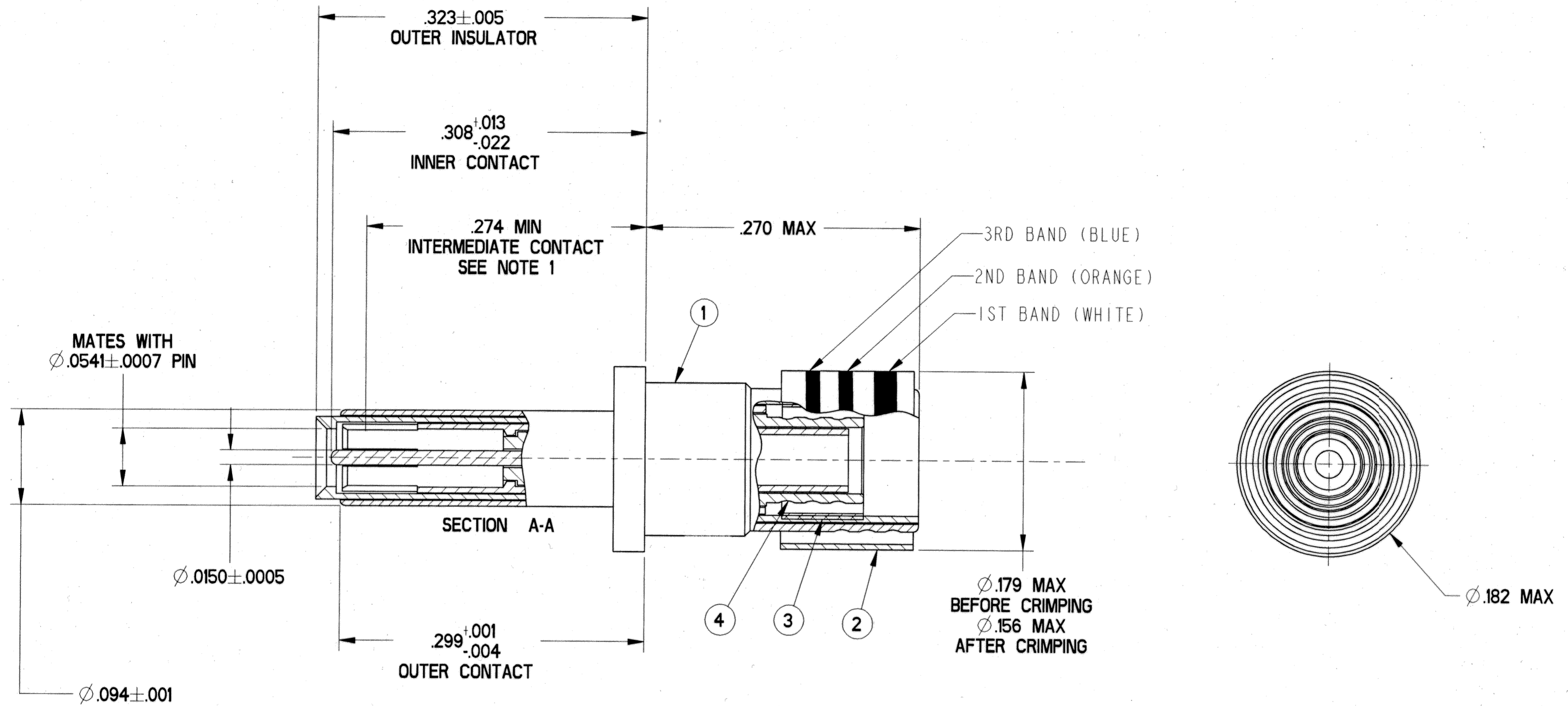


REVISIONS			
LTR	DESCRIPTION	DATE	APPVD
A	INITIAL RELEASE NUM: R2001-110		
B	(CL11) SEE ENG CHG ECN:91905	JHEATH 10/18/02	JHEATH 3/3/03



6. MEETS THE REQUIREMENTS OF DSCC 02004-936.
5. MATES WITH TWINAX & TRIAX SOCKET CONTACTS 21-33908-XX (JN1104-75T INTERFACE).
4. TERMINATES TWINAX CABLES M17/176-00002 & GSC-12-2549-00 OR EQUIVALENT.
3. INDICATED COMPONENT IS NOT ILLUSTRATED. COMPLETE INSTALLATION INSTRUCTIONS PACKAGED WITH EACH ASSEMBLY. PACKAGE PER PRODUCTION PROCESS SHEET.
2. PROCESS SPEC:  
TEST 9-5272-36
1. INDICATED DIMENSION IS FROM THE REAR OF THE OUTER CONTACT SHOULDER TO THE POINT AT WHICH A Ø.0541±.0002 SQUARE ENDED PIN ENGAGES THE INTERMEDIATE SOCKET CONTACT SPRING.

**NOTES:**  
THE USE OF THIS DOCUMENT IS UNLIMITED. HOWEVER, DOCUMENTS REFERENCED HEREON MAY CONTAIN LIMITED RIGHTS DATA.

COMPANY ID: 9	CODED/MS/CUST: N	N/A
INTERNAL: N	LOT NO: N	N/A
DATE CODE: N	SEE DRAW: N	N/A
STAMPING DATA		NEXT ASSEMBLY

UNLESS OTHERWISE SPECIFIED	SPECIFICATIONS	POS	QTY	PART NUMBER	DESCRIPTION	NOTE		
LINEAR DIMENSIONS ARE IN INCHES TOLERANCES: .XXXX = ±.0005 .XXX = ±.010 .XX = ±.03 .X = ±.1 ANGLES = ±2° OTHER STANDARDS PER 9-3800 AND DOD-D-1000 THIRD ANGLE PROJECTION	MATERIAL SPEC.	PARTS LIST						
	N/A	APPROVALS	DATE	AMPHENOL CORPORATION SIDNEY, N.Y. 13838				
	PROCESS SPEC.	PREPARED	RATCHFORD	07-Dec-00	CONTACT, PIN, TWINAX, ELECTRICAL CONNECTOR, TYPE JT-R, SIZE 12			
	SEE NOTE 2	CHECKED	RATCHFORD	10-Apr-01	U			
		APPROVED	RATCHFORD	10-Apr-01	SIZE	FSM NO.	DOCUMENT NO.	
		APPROVED	RATCHFORD	10-Apr-01	C	77820	21-33909-25	REV. B
		PRO/ENG INFORMATION		SCALE: 12.0		REF: 21-33909-12	SHEET 1 OF 1	
		TW_PIN_ASY_25_STD_ASSEM						
		21-33909-25_STD_REV B						

FAMCODES DATA3: FALSE CICS: FALSE

21-33909-25