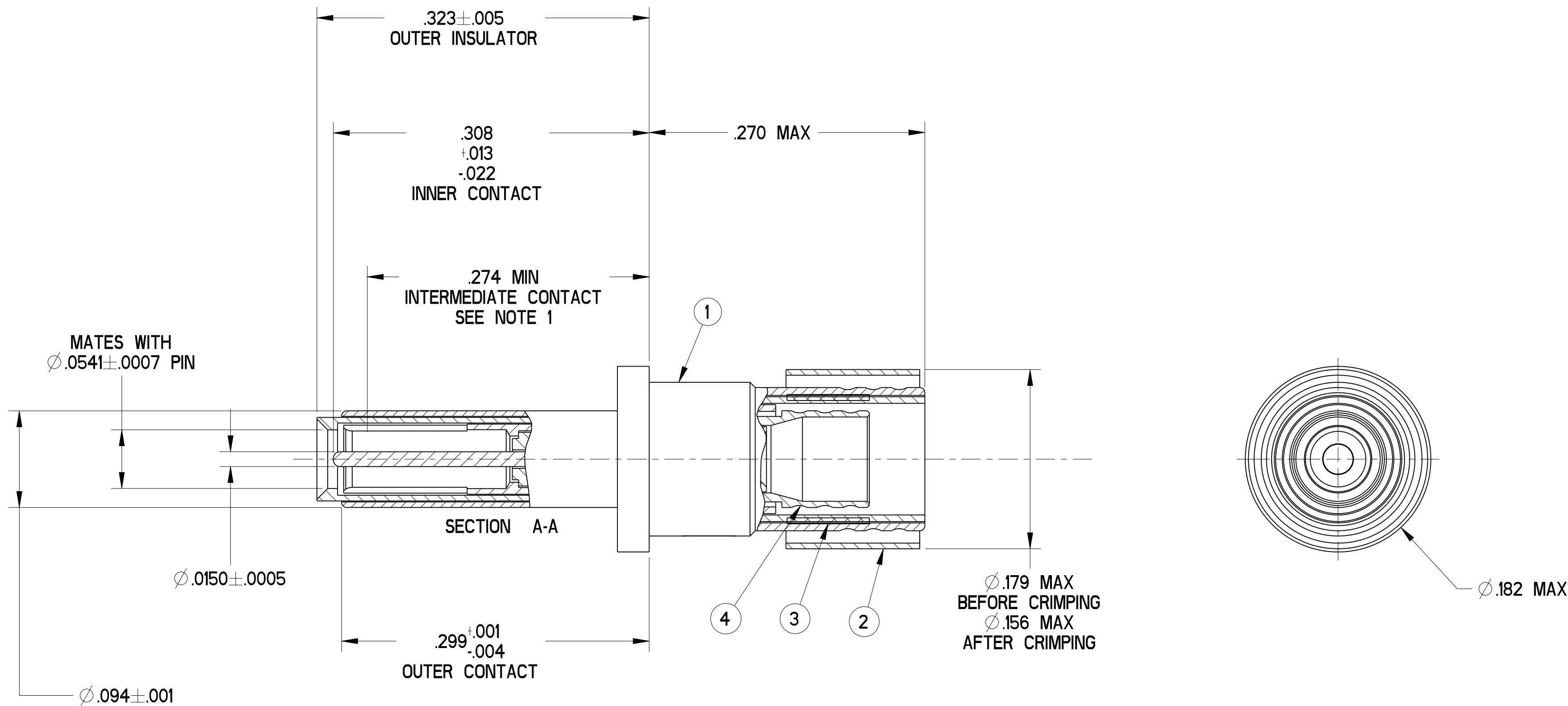


REVISIONS			
LTR	DESCRIPTION	DATE	APPVD
A	INITIAL RELEASE NUM: R2001-83		
B	(CL 11) POS. 4 WAS: -2 ECN: 95940	V. JONES 3-1-05	



5. MATES WITH TWINAX & TRIAX SOCKET CONTACTS 21-33908-XX (JN1104-75T INTERFACE).
4. TERMINATES TWINAX CABLE 0024A0024 (CHEMINAX) OR EQUIVALENT.
3. INDICATED COMPONENT IS NOT ILLUSTRATED. COMPLETE INSTALLATION INSTRUCTIONS PACKAGED WITH EACH ASSEMBLY. PACKAGE PER PRODUCTION PROCESS SHEET.
2. PROCESS SPEC:
TEST 9-5272-36
1. INDICATED DIMENSION IS FROM THE REAR OF THE OUTER CONTACT SHOULDER TO THE POINT AT WHICH A Ø.0541±.0002 SQUARE ENDED PIN ENGAGES THE INTERMEDIATE SOCKET CONTACT SPRING.

NOTES:

THE USE OF THIS DOCUMENT IS UNLIMITED. HOWEVER, DOCUMENTS REFERENCED HEREON MAY CONTAIN LIMITED RIGHTS DATA.

COMPANY ID: 9	CODED/MS/CUST: N	N/A
INTERNAL: N	LOT NO: N	
DATE CODE: N	SEE DRAW: N	N/A
STAMPING DATA		NEXT ASSEMBLY

POS	QTY	PART NUMBER	DESCRIPTION	NOTE
5	1	21-33628-9	INSTALLATION INSTRUCTIONS	3
4	1	21-33603-21	INNER CONTACT ASSEMBLY	
3	1	21-33765-66	FERRULE, INTERMEDIATE	
2	1	21-33765-551	FERRULE, OUTER	
1	1	21-33751-4	OUTER CONTACT ASSEMBLY	

UNLESS OTHERWISE SPECIFIED	SPECIFICATIONS	POS	QTY	PART NUMBER	DESCRIPTION	NOTE																																							
LINEAR DIMENSIONS ARE IN INCHES TOLERANCES: .XXXX = ±.0005 .XXX = ±.010 .XX = ±.03 .X = ±.1 ANGLES = ±2° OTHER STANDARDS PER 9-3800 AND DOD-D-1000 THIRD ANGLE PROJECTION	MATERIAL SPEC.	<table border="1"> <tr> <th colspan="2">APPROVALS</th> <th>DATE</th> <th colspan="3">PARTS LIST</th> </tr> <tr> <td>PREPARED</td> <td>RATCHFORD</td> <td>07-Dec-00</td> <td colspan="3"> AMPHENOL CORPORATION <small>SIDNEY, N.Y. 13838</small> </td> </tr> <tr> <td>CHECKED</td> <td>L. RATCHFORD</td> <td>3-15-01</td> <td colspan="3"> CONTACT, PIN, TWINAX, ELECTRICAL CONNECTOR, TYPE JT-R, SIZE 12 </td> </tr> <tr> <td>MATERIAL</td> <td>N/A L.R.</td> <td>3-15-01</td> <td>SIZE</td> <td>FSCM NO.</td> <td>DOCUMENT NO.</td> <td>REV.</td> </tr> <tr> <td>PROCESS SPEC.</td> <td>SEE NOTE 2</td> <td>APPROVED</td> <td>C</td> <td>77820</td> <td>21-33909-28</td> <td>B</td> </tr> <tr> <td></td> <td></td> <td>APPROVED</td> <td colspan="4"> SCALE: 12.0 REF: 21-33909-12 SHEET 1 OF 1 </td> </tr> </table>					APPROVALS		DATE	PARTS LIST			PREPARED	RATCHFORD	07-Dec-00	AMPHENOL CORPORATION <small>SIDNEY, N.Y. 13838</small>			CHECKED	L. RATCHFORD	3-15-01	CONTACT, PIN, TWINAX, ELECTRICAL CONNECTOR, TYPE JT-R, SIZE 12			MATERIAL	N/A L.R.	3-15-01	SIZE	FSCM NO.	DOCUMENT NO.	REV.	PROCESS SPEC.	SEE NOTE 2	APPROVED	C	77820	21-33909-28	B			APPROVED	SCALE: 12.0 REF: 21-33909-12 SHEET 1 OF 1			
	APPROVALS		DATE	PARTS LIST																																									
	PREPARED	RATCHFORD	07-Dec-00	AMPHENOL CORPORATION <small>SIDNEY, N.Y. 13838</small>																																									
	CHECKED	L. RATCHFORD	3-15-01	CONTACT, PIN, TWINAX, ELECTRICAL CONNECTOR, TYPE JT-R, SIZE 12																																									
MATERIAL	N/A L.R.	3-15-01	SIZE	FSCM NO.	DOCUMENT NO.	REV.																																							
PROCESS SPEC.	SEE NOTE 2	APPROVED	C	77820	21-33909-28	B																																							
		APPROVED	SCALE: 12.0 REF: 21-33909-12 SHEET 1 OF 1																																										

FAMCODES DATA3: FALSE CICS: FALSE

21-33909-28

DOC NO

SH

1 OF 1

A

1