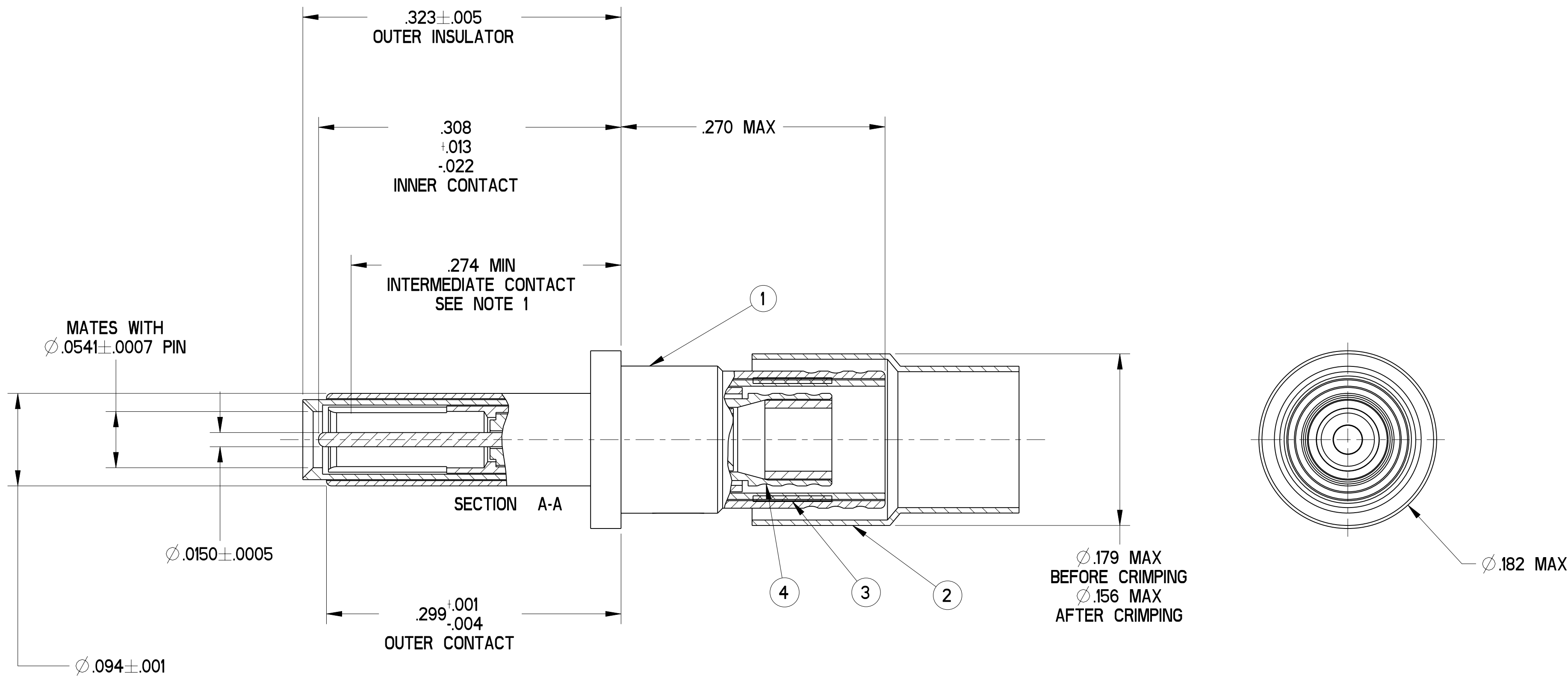


REVISIONS			
LTR	DESCRIPTION	DATE	APPVD
A	INITIAL RELEASE NUM: R2001-406		
B	(CL 11) POS. 4 WAS: -2 ECN: 95940	V. JONES 3-1-05	



5. MATES WITH TWINAX & TRIAX SOCKET CONTACTS 21-33908-XX (JN1104-75T INTERFACE).
4. TERMINATES TWINAX CABLE EPD32263A OR EQUIVALENT.
3. INDICATED COMPONENT IS NOT ILLUSTRATED. COMPLETE INSTALLATION INSTRUCTIONS PACKAGED WITH EACH ASSEMBLY. PACKAGE PER PRODUCTION PROCESS SHEET.
2. PROCESS SPEC:
TEST 9-5272-36
1. INDICATED DIMENSION IS FROM THE REAR OF THE OUTER CONTACT SHOULDER TO THE POINT AT WHICH A Ø.0541 ± .0002 SQUARE ENDED PIN ENGAGES THE INTERMEDIATE SOCKET CONTACT SPRING.

NOTES:

THE USE OF THIS DOCUMENT IS UNLIMITED. HOWEVER, DOCUMENTS REFERENCED HEREON MAY CONTAIN LIMITED RIGHTS DATA.

COMPANY ID: 9	CODED/MS/CUST: N	N/A
INTERNAL: N	LOT NO: N	
DATE CODE: N	SEE DRAW: N	N/A
STAMPING DATA		NEXT ASSEMBLY

POS	QTY	PART NUMBER	DESCRIPTION	NOTE
5	1	L-2092-H	INSTALLATION INSTRUCTIONS	3
4	1	21-33603-21	INNER CONTACT ASSEMBLY	
3	1	21-33765-66	FERRULE, INTERMEDIATE	
2	1	21-33765-55	FERRULE, OUTER	
1	1	21-33751-4	OUTER CONTACT ASSEMBLY	

UNLESS OTHERWISE SPECIFIED	SPECIFICATIONS	POS	QTY	PART NUMBER	DESCRIPTION	NOTE																																										
LINEAR DIMENSIONS ARE IN INCHES TOLERANCES: .XXXX = ±.0005 .XXX = ±.010 .XX = ±.03 .X = ±.1 ANGLES = ±2° OTHER STANDARDS PER 9-3800 AND DOD-D-1000 THIRD ANGLE PROJECTION	MATERIAL SPEC.	<table border="1"> <tr> <th colspan="2">APPROVALS</th> <th>DATE</th> <th colspan="3">PARTS LIST</th> </tr> <tr> <td>PREPARED</td> <td>RATCHFORD</td> <td>07-DEC-00</td> <td colspan="3"> AMPHENOL CORPORATION <small>SIDNEY, N.Y. 13838</small> </td> </tr> <tr> <td>CHECKED</td> <td>L. RATCHFORD</td> <td>10-22-01</td> <td colspan="3"> CONTACT, PIN, TWINAX, ELECTRICAL CONNECTOR, TYPE JT-R, SIZE 12 </td> </tr> <tr> <td>MATERIAL</td> <td>N/A LR</td> <td>10-22-01</td> <td>SIZE</td> <td>FSCM NO.</td> <td>DOCUMENT NO.</td> <td>REV.</td> </tr> <tr> <td>PROCESS SPEC.</td> <td>SEE NOTE 2</td> <td>APPROVED</td> <td>AL DAVIS</td> <td>10-26-01</td> <td>C</td> <td>77820</td> <td>21-33909-29</td> <td>B</td> </tr> <tr> <td></td> <td></td> <td>APPROVED</td> <td>L. RATCHFORD</td> <td>10-22-01</td> <td>SCALE: 12.0</td> <td>REF: 21-33909-12</td> <td>SHEET 1 OF 1</td> </tr> </table>					APPROVALS		DATE	PARTS LIST			PREPARED	RATCHFORD	07-DEC-00	AMPHENOL CORPORATION <small>SIDNEY, N.Y. 13838</small>			CHECKED	L. RATCHFORD	10-22-01	CONTACT, PIN, TWINAX, ELECTRICAL CONNECTOR, TYPE JT-R, SIZE 12			MATERIAL	N/A LR	10-22-01	SIZE	FSCM NO.	DOCUMENT NO.	REV.	PROCESS SPEC.	SEE NOTE 2	APPROVED	AL DAVIS	10-26-01	C	77820	21-33909-29	B			APPROVED	L. RATCHFORD	10-22-01	SCALE: 12.0	REF: 21-33909-12	SHEET 1 OF 1
	APPROVALS		DATE	PARTS LIST																																												
	PREPARED	RATCHFORD	07-DEC-00	AMPHENOL CORPORATION <small>SIDNEY, N.Y. 13838</small>																																												
	CHECKED	L. RATCHFORD	10-22-01	CONTACT, PIN, TWINAX, ELECTRICAL CONNECTOR, TYPE JT-R, SIZE 12																																												
MATERIAL	N/A LR	10-22-01	SIZE	FSCM NO.	DOCUMENT NO.	REV.																																										
PROCESS SPEC.	SEE NOTE 2	APPROVED	AL DAVIS	10-26-01	C	77820	21-33909-29	B																																								
		APPROVED	L. RATCHFORD	10-22-01	SCALE: 12.0	REF: 21-33909-12	SHEET 1 OF 1																																									

FAMCODES DATA3: FALSE CICS: FALSE

21-33909-29

DOC NO

SH

1 OF 1

A

U

2

1