

REV. A		SHEET 1 OF 1		DOCUMENT NO. 21-033909-081	
REVISIONS					
LTR	DESCRIPTION			DATE	
A	INITIAL RELEASE				

21-033909-081

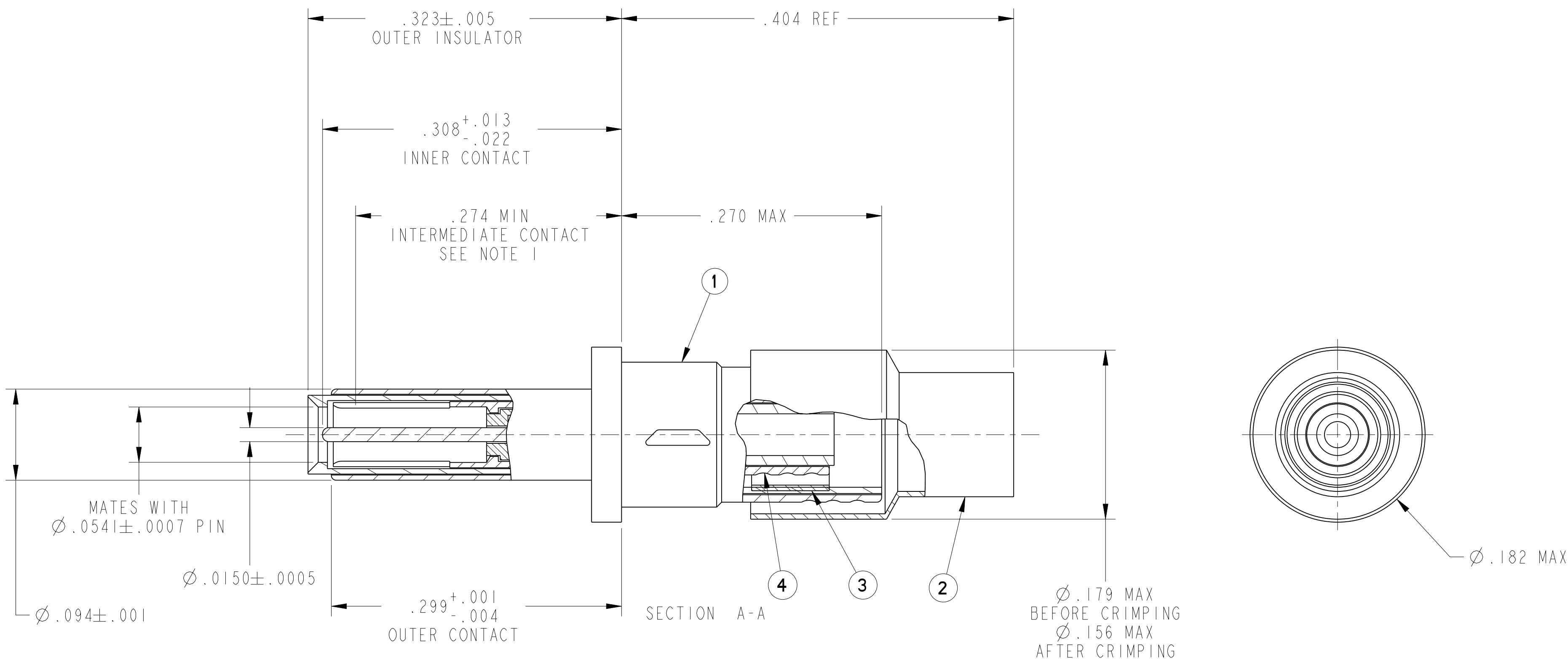
SHEET 1 OF 1

REV. A

C

B

A



5. MATES WITH TWINAX & TRIAX SOCKET CONTACTS 21-33908-XX (JN1104*75T INTERFACE).
4. TERMINATES TWINAX CABLES 5PTMIT04-1 OR EQUIVALENT.
3. INDICATED COMPONENT IS NOT ILLUSTRATED. COMPLETE INSTALLATION INSTRUCTIONS PACKAGED WITH EACH ASSEMBLY. PACKAGE PER PRODUCTION PROCESS SHEET.
2. PROCESS SPEC:
TEST 9-5272-36
1. INDICATED DIMENSION IS FROM THE REAR OF THE OUTER CONTACT SHOULDER TO THE POINT AT WHICH A Ø.0541±.0002 SQUARE ENDED PIN ENGAGES THE INTERMEDIATE SOCKET CONTACT SPRING.

NOTES:

THE USE OF THIS DOCUMENT IS UNLIMITED. HOWEVER, DOCUMENTS REFERENCED HEREON MAY CONTAIN LIMITED RIGHTS DATA.

N/A
NEXT ASSEMBLY

PRO/ENGINEER INFORMATION
 Pro/e Model Used:
 21-033909-081.ASSEM
 Drawing Name:
 21-33909-81

UNLESS OTHERWISE SPECIFIED
 LINEAR DIMENSIONS ARE IN INCHES
 TOLERANCES:
 .XXXX = ±.0005 ANGLES= ±2°
 .XXX = ±.010
 .XX = ±.03
 .X = ±.1
 DIM. & TOL. PER ASME Y14.5M;
 DRM PER MIL-DTL-31000;
 OTHER Amphenol Stds. PER 9-3800
 LEGENDS:
 =FLAG NOTE CALL OUT REFERENCE ONLY

SPECIFICATIONS
 MATERIAL SPEC.
 N/A
 PROCESS SPEC.
 SEE NOTE 2

POS	QTY	PART NUMBER	DESCRIPTION	NOTE
5	1	L-2092-AB	INSTALLATION INSTRUCTIONS	3
4	1	21-033628-881	INNER CONTACT ASSEMBLY	
3	1	21-033628-051	FERRULE, INTERMEDIATE	
2	1	21-033765-005	FERRULE, OUTER	
1	1	21-033751-004	OUTER CONTACT ASSEMBLY	

APPROVALS	DATE
PREPARED BY DJSMTTH	20-Feb-07
ENGINEER IN CHARGE LRATCHFORD	
DESIGN MANAGER HJOHNSON	
DESIGN ACTIVITY GROUP MIL AERO DEVELOP	

PARTS LIST

AMPHENOL CORPORATION
 40-60 DELAWARE AVENUE
 SIDNEY, N.Y. 13858

**CONTACT, PIN, TWINAX,
 ELECTRICAL CONNECTOR,
 TYPE JT-R, SIZE 12**

SIZE C	CAGE CODE 77820	DOCUMENT NO. 21-033909-081	REV. A
SCALE: 12.0		REF. 21-33909-25	SHEET 1 OF 1

RELEASED / Jul. 12 2007, 11:09 AM

DOCUMENT NO. 21-033909-081

SHEET 1 OF 1

REV. A

21-033909-081

SHEET 1 OF 1

REV. A

C

B

A

21-033909-081