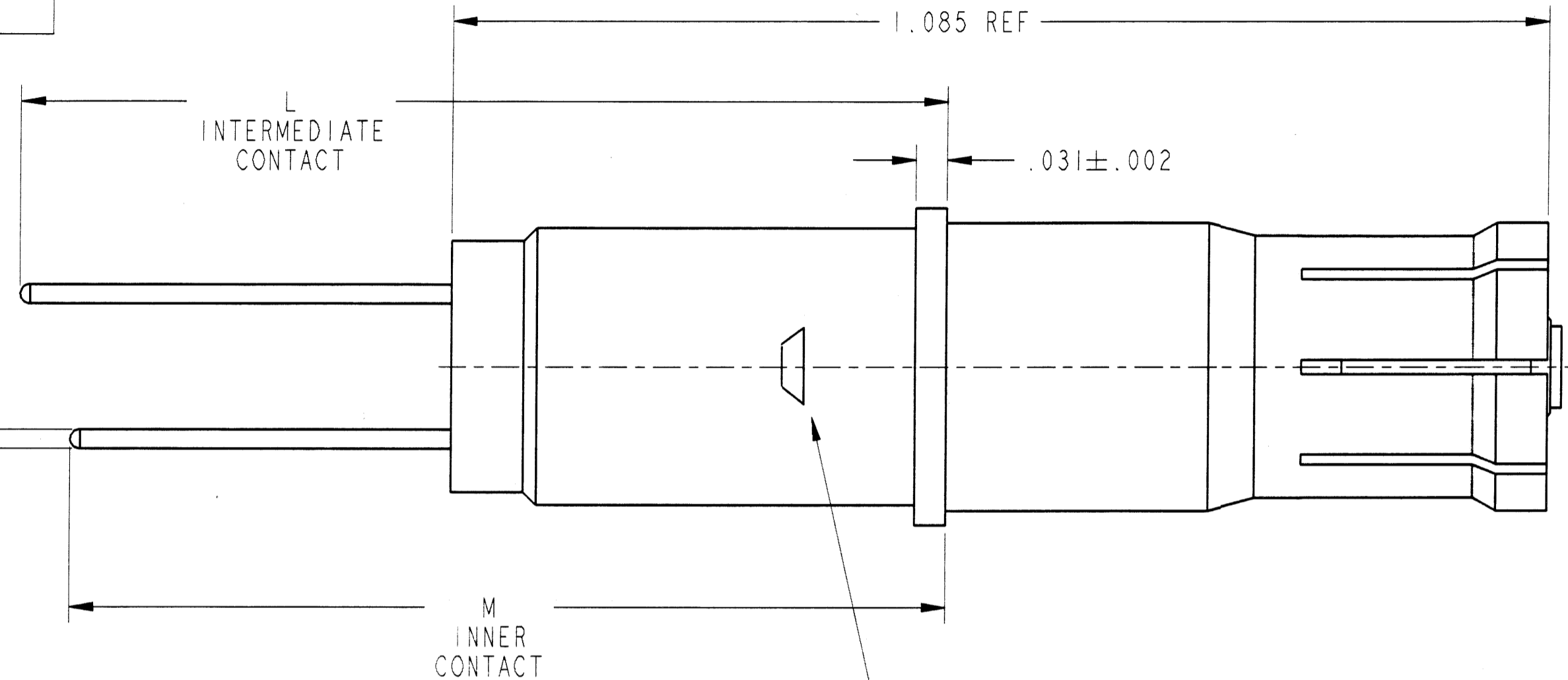
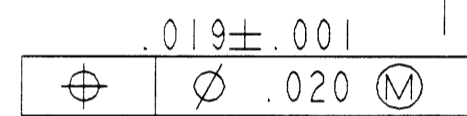
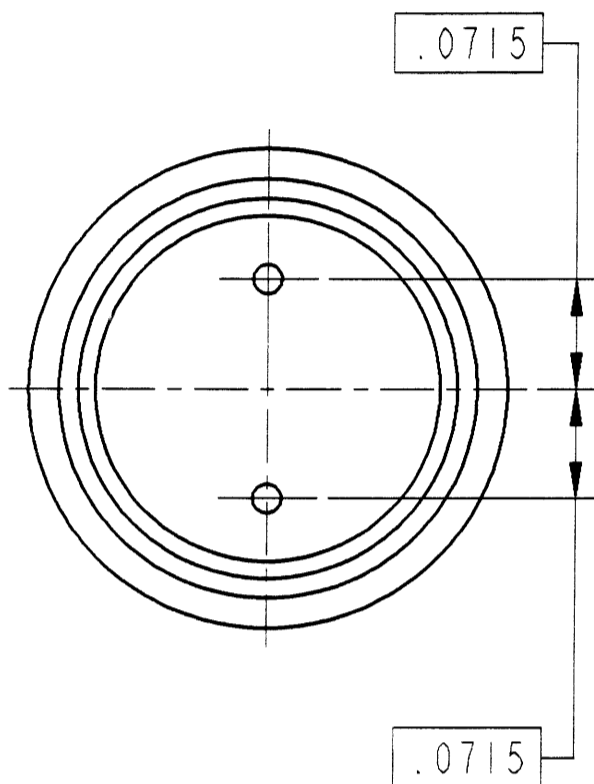


ASSEMBLY NUMBER	CONTACT ASSEMBLY	L ±.022	M ±.022
21-33919-15	21-33919-1M	.917	.867
21-33919-25	21-33919-2M	1.167	1.117

REVISIONS			
LTR	DESCRIPTION	DATE	APPVD
A	INITIAL RELEASE NUM: 7809A-199		
B	(CL I) SEE CHANGE SHEET ECN: 80944	8-16-96 groesch	
C	(CL I) IN NOTE 1 9-5272-30 (WAS: 9-5275-30) ECN: A9965	7-22-10 JONES	



8. CLEANING OF PARTS IN CHLORINATED SOLVENTS IS NOT PERMISSIBLE.
7. A TEST VOLTAGE OF 500 VOLTS AC RMS SHALL BE APPLIED BETWEEN THE CENTER CONTACT AND THE INTERMEDIATE CONTACT AND BETWEEN THE INTERMEDIATE CONTACT AND THE OUTER CONTACT. THE VOLTAGE SHALL BE APPLIED FOR 5 SECONDS MINIMUM. THE LEAKAGE CURRENT SHALL NOT EXCEED 1 MILLIAMPERE. THERE SHALL BE NO EVIDENCE OF BREAKDOWN OR FLASHOVER.
6. VACUUM DEGAS PER 9-7169.
5. **IF NOT PREVIOUSLY STAMPED, BLACK INK STAMP TRADEMARK 9-6700 TYPE IV, PER 9-3856-5 IN APPROXIMATE POSITION SHOWN. DIRECTION OPTIONAL. TRADEMARK MAY BE SOLID OR FRAME.**
4. CAUTION: HANDLE ASSEMBLY CAREFULLY TO PREVENT MISALIGNMENT OF PCB CONTACT TAILS.
3. MATES WITH ANY SIZE 8 CONCENTRIC TWINAX PIN CONTACT IN PART NUMBER SERIES 21-33190-().
2. DRAWING ILLUSTRATES FINAL ASSEMBLY, PACKAGE PER PRODUCTION PROCESS SHEET (SEE NOTE 4).
1. PROCESS SPEC:
TEST 9-5272-30, ELECTRICAL TEST PER NOTE 7, 9-6700, 9-3856-5, 9-7169

NOTES:

THE USE OF THIS DOCUMENT IS UNLIMITED. HOWEVER, DOCUMENTS REFERENCED HEREON MAY CONTAIN LIMITED RIGHTS DATA.

COMPANY ID: 9	CODED/MS/CUST: N	M38999 III CONN.
INTERNAL: N	LOT NO: N	
DATE CODE: N	SEE DRAW: N	N/A
STAMPING DATA		NEXT ASSEMBLY

UNLESS OTHERWISE SPECIFIED	SPECIFICATIONS	PARTS LIST		CONTACT ASSEMBLY DESCRIPTION	NOTE
		POS	QTY		
LINEAR DIMENSIONS ARE IN INCHES TOLERANCES:- .XXXX = ±.0005 .XXX = ±.010 .XX = ±.03 .X = ±.1 ANGLES = ±2° OTHER STANDARDS PER 9-3800 AND DOD-D-1000 THIRD ANGLE PROJECTION	MATERIAL SPEC.	APPROVALS		DATE	AMPHENOL CORPORATION 40-60 DELAWARE AVENUE SIDNEY, NEW YORK CONTACT, SOCKET, CONCENTRIC TWINAX, SIZE 8 PCB STYLE TERMINATION
	PROCESS SPEC. SEE NOTE 1	PREPARED	RATCHFORD	15-APR-94	
		CHECKED	<i>[Signature]</i>		
		APPROVED	<i>[Signature]</i>	4/23/94	
SEE NOTE 1		APPROVED	<i>[Signature]</i>	4-25-94	SIZE: C FSCM NO: 77820 DOCUMENT NO: 21-33919 REV: C

SCALE: 8.0	REF: 21-33875-1	SHEET 1 OF 1
------------	-----------------	--------------

FAMCODES DATA3: CICS:

21-33967-15

21-33919

1 OF 1