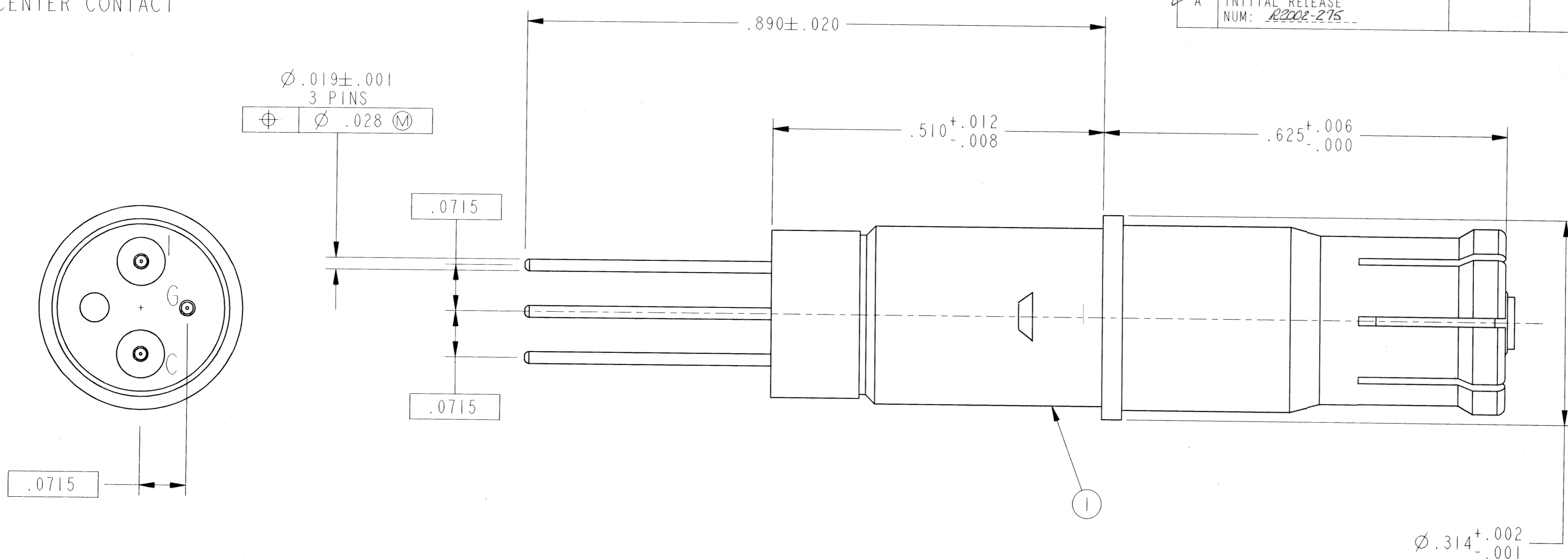


I = INTERMEDIATE CONTACT
 G = OUTER CONTACT
 C = CENTER CONTACT

| REVISIONS | | | |
|-----------|---------------------------------------|------|-------|
| LTR | DESCRIPTION | DATE | APPVD |
| ✓ A | INITIAL RELEASE NUM: <i>R2002-275</i> | | |



7. CLEANING OF PARTS IN CHLORINATED SOLVENTS IS NOT PERMISSIBLE.
6. A TEST VOLTAGE OF 500 VOLTS AC RMS SHALL BE APPLIED BETWEEN THE CENTER CONTACT (C) AND THE INTERMEDIATE CONTACT (I) AND BETWEEN THE INTERMEDIATE CONTACT (I) AND THE OUTER CONTACT (G). THE VOLTAGE SHALL BE APPLIED FOR 5 SECONDS MINIMUM. THE LEAKAGE CURRENT SHALL NOT EXCEED 1 MILLIAMPERE. THERE SHALL BE NO EVIDENCE OF BREAKDOWN OR FLASHOVER.
5. WHILE FULLY MATED WITH A 21-33190-529 TWINAX PIN CONTACT, A TEST VOLTAGE OF 1.5 VOLTS DC SHALL BE APPLIED BETWEEN THE PCB TAIL OF THE SOCKET CONTACT AND A POINT $3.500 \pm .100$ FROM THE REAR OF THE PIN CONTACT (PIN CONTACT TERMINATED WITH M17/176-00002 TWINAX CABLE). THE MAXIMUM VOLTAGE DROP SHALL BE 30 MILLIVOLTS WITH A TEST CURRENT OF 1 AMP. ALL PCB TAILS MUST BE 100% CHECKED FOR THIS REQUIREMENT.
4. CAUTION: HANDLE ASSEMBLY CAREFULLY TO PREVENT MISALIGNMENT OF PIN CONTACT TAILS.
3. MATES WITH ANY SIZE 8 CONCENTRIC TWINAX PIN CONTACT IN PART NUMBER SERIES 21-33190-().
2. DRAWING ILLUSTRATES FINAL ASSEMBLY, PACKAGE PER PRODUCTION PROCESS SHEET (SEE NOTE 4).
1. PROCESS SPEC:
 TEST 9-5275-30, ELECTRICAL TEST PER NOTES 5 & 6.

NOTES:
 WARNING: IF THIS BOX IS CHECKED; THIS DRAWING HAS BEEN MODIFIED BY HAND-DRAFTING WITHOUT COMPUTER UPDATING

THE USE OF THIS DOCUMENT IS UNLIMITED. HOWEVER, DOCUMENTS REFERENCED HEREON MAY CONTAIN LIMITED RIGHTS DATA.

| | |
|-----|---------------------------------|
| N/A | PRO/ENGINEER INFORMATION |
| N/A | Pro/e Model Used: |
| | 21-33921-65_PCB_ASY.ASSEMBLY |
| | Drawing Name: |
| | 21-33921-65_PCB_TOPASY |
| | NEXT ASSEMBLY |

| | |
|---|----------------|
| UNLESS OTHERWISE SPECIFIED | SPECIFICATIONS |
| LINEAR DIMENSIONS ARE IN INCHES | MATERIAL SPEC. |
| TOLERANCES: | N/A |
| .XXXX = ±.0005 | |
| .XXX = ±.010 | |
| .XX = ±.03 | |
| .X = ±.1 | |
| ANGLES = ±2° | |
| OTHER STANDARDS PER 9-3800 AND DOD-D-1000 | |
| THIRD ANGLE PROJECTION | SEE NOTE 1 |

| | | | | | | | | | | | | | | | | | | | | | | | | | | | | | | | | | | | |
|--|-----------|--|------------------------|----------------------------------|-----------|------|-----------------------------|--|--|---------------------|-----------|--|--|--|----------------------------------|---------|--|--|--|-------------------------------|---------|------------------------------|---------|--|---------|------------------------------|---------|----------------|------------------------|----------------------------------|-----------------------------------|---------|------------|------------------|--------------|
| I | I | 21-33921-65M | CONTACT ASSEMBLY | | | | | | | | | | | | | | | | | | | | | | | | | | | | | | | | |
| POS | QTY | PART NUMBER | DESCRIPTION | NOTE | | | | | | | | | | | | | | | | | | | | | | | | | | | | | | | |
| PARTS LIST | | | | | | | | | | | | | | | | | | | | | | | | | | | | | | | | | | | |
| <table border="1"> <tr> <td>APPROVALS</td> <td>DATE</td> <td colspan="3">AMPHENOL CORPORATION</td> </tr> <tr> <td>PREPARED: RATCHFORD</td> <td>21-May-02</td> <td colspan="3">AMPHENOL AEROSPACE OPERATIONS SUNNYVALE, N.Y. 10888</td> </tr> <tr> <td>CHECKED-ENG: <i>L. Katchford</i></td> <td>5/23/02</td> <td colspan="3" rowspan="4">CONTACT, SOCKET, CONCENTRIC TWINAX, SIZE 8 PCB STYLE TERMINATION</td> </tr> <tr> <td>APPROVED-MATERIAL: <i>N/A</i></td> <td>5/23/02</td> </tr> <tr> <td>APPROVED-PROCESS: <i>N/A</i></td> <td>5/23/02</td> </tr> <tr> <td>APPROVED-ENG-IN-CHG: <i>L. Katchford</i></td> <td>5/23/02</td> </tr> <tr> <td>APPROVED-QUALITY: <i>N/A</i></td> <td>5/23/02</td> <td>SIZE: C</td> <td>FSCM NO.: 77820</td> <td>DOCUMENT NO.: 21-33921-65</td> </tr> <tr> <td>APPROVED-ENG-MGR: <i>Al Davis</i></td> <td>5-30-02</td> <td>SCALE: 8 0</td> <td>REF: 21-33921-15</td> <td>SHEET 1 OF 1</td> </tr> </table> | | | | | APPROVALS | DATE | AMPHENOL CORPORATION | | | PREPARED: RATCHFORD | 21-May-02 | AMPHENOL AEROSPACE OPERATIONS SUNNYVALE, N.Y. 10888 | | | CHECKED-ENG: <i>L. Katchford</i> | 5/23/02 | CONTACT, SOCKET, CONCENTRIC TWINAX, SIZE 8 PCB STYLE TERMINATION | | | APPROVED-MATERIAL: <i>N/A</i> | 5/23/02 | APPROVED-PROCESS: <i>N/A</i> | 5/23/02 | APPROVED-ENG-IN-CHG: <i>L. Katchford</i> | 5/23/02 | APPROVED-QUALITY: <i>N/A</i> | 5/23/02 | SIZE: C | FSCM NO.: 77820 | DOCUMENT NO.: 21-33921-65 | APPROVED-ENG-MGR: <i>Al Davis</i> | 5-30-02 | SCALE: 8 0 | REF: 21-33921-15 | SHEET 1 OF 1 |
| APPROVALS | DATE | AMPHENOL CORPORATION | | | | | | | | | | | | | | | | | | | | | | | | | | | | | | | | | |
| PREPARED: RATCHFORD | 21-May-02 | AMPHENOL AEROSPACE OPERATIONS SUNNYVALE, N.Y. 10888 | | | | | | | | | | | | | | | | | | | | | | | | | | | | | | | | | |
| CHECKED-ENG: <i>L. Katchford</i> | 5/23/02 | CONTACT, SOCKET, CONCENTRIC TWINAX, SIZE 8 PCB STYLE TERMINATION | | | | | | | | | | | | | | | | | | | | | | | | | | | | | | | | | |
| APPROVED-MATERIAL: <i>N/A</i> | 5/23/02 | | | | | | | | | | | | | | | | | | | | | | | | | | | | | | | | | | |
| APPROVED-PROCESS: <i>N/A</i> | 5/23/02 | | | | | | | | | | | | | | | | | | | | | | | | | | | | | | | | | | |
| APPROVED-ENG-IN-CHG: <i>L. Katchford</i> | 5/23/02 | | | | | | | | | | | | | | | | | | | | | | | | | | | | | | | | | | |
| APPROVED-QUALITY: <i>N/A</i> | 5/23/02 | SIZE: C | FSCM NO.: 77820 | DOCUMENT NO.: 21-33921-65 | | | | | | | | | | | | | | | | | | | | | | | | | | | | | | | |
| APPROVED-ENG-MGR: <i>Al Davis</i> | 5-30-02 | SCALE: 8 0 | REF: 21-33921-15 | SHEET 1 OF 1 | | | | | | | | | | | | | | | | | | | | | | | | | | | | | | | |

21-33921-65

SHEET 1 OF 1

REV. A

C

B

A

SHEET 1 OF 1

21-33921-65

A