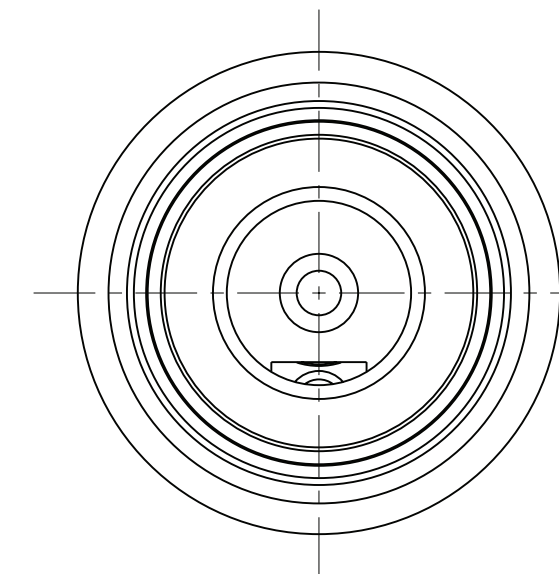
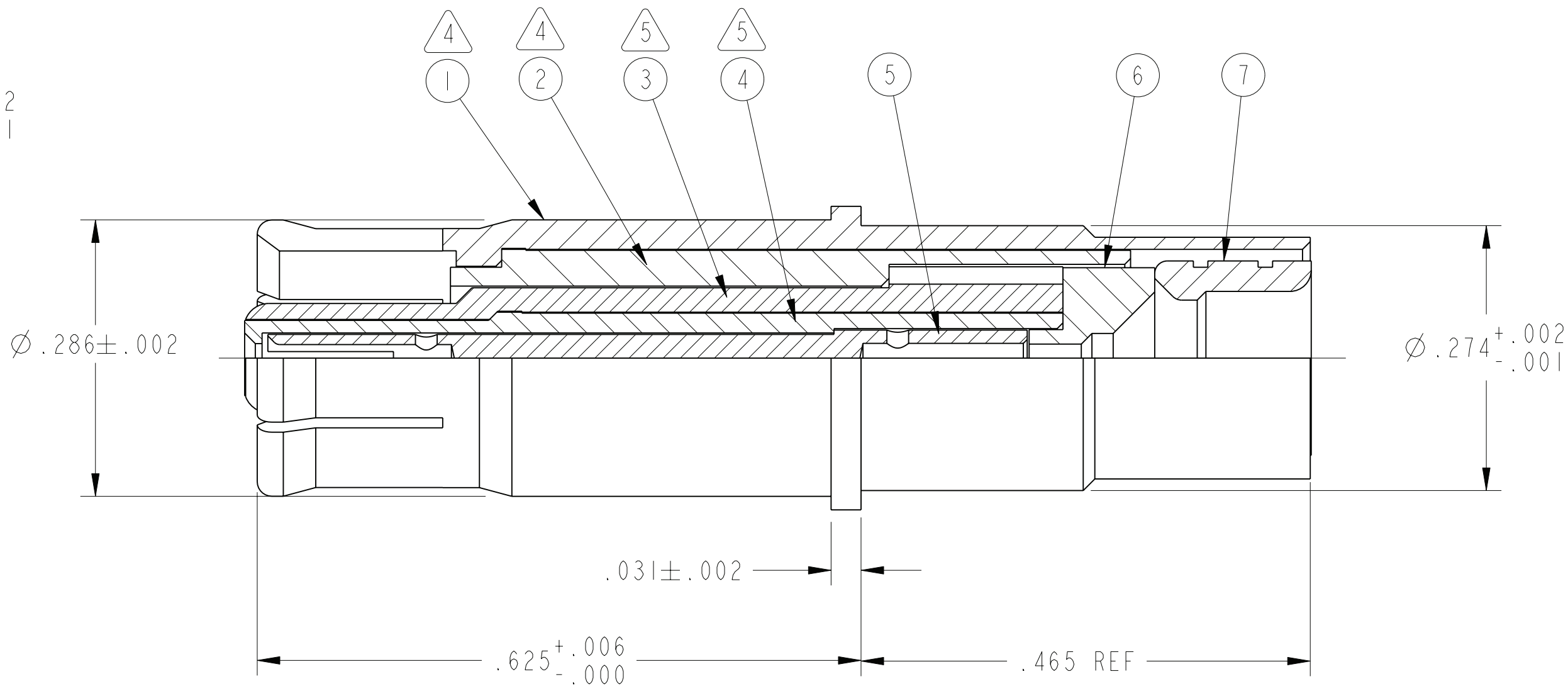
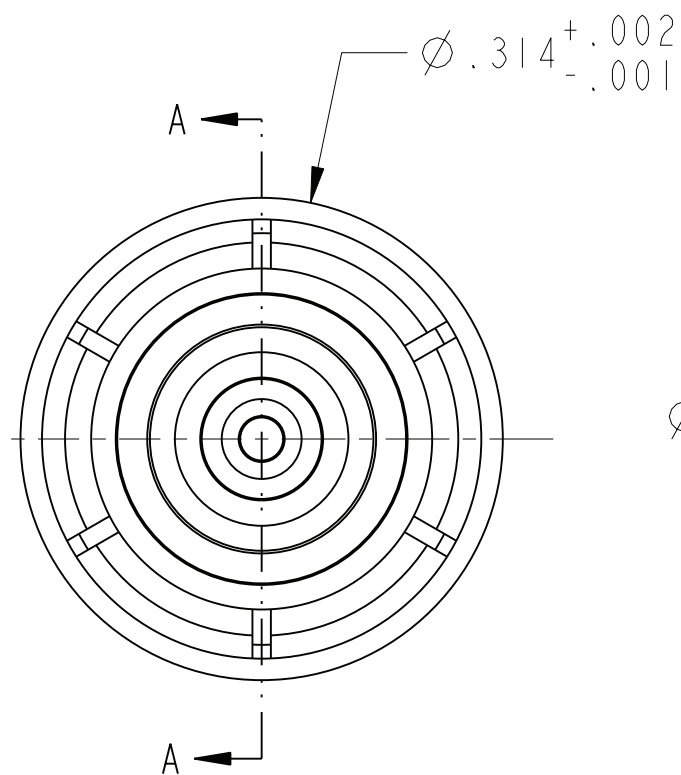
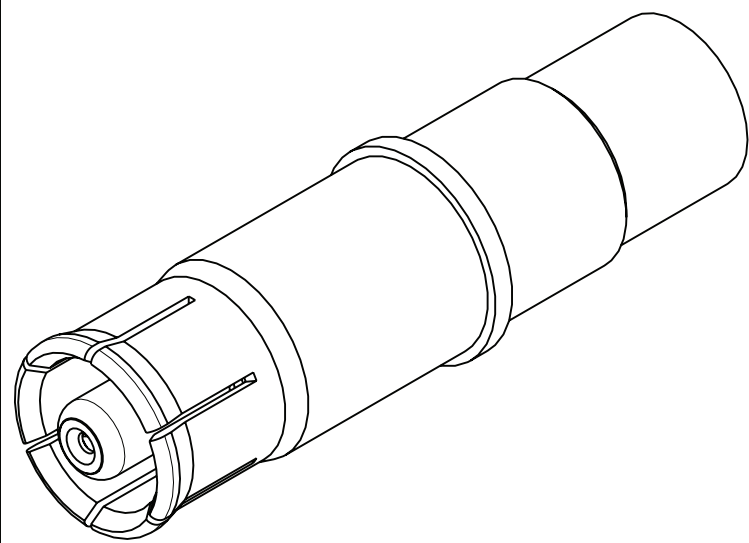


|           |  |                     |
|-----------|--|---------------------|
| <b>B</b>  | SHEET 1 OF 1                             | <b>T3-47TD08-LD</b> |
| REVISIONS |  |                     |
| LTR       | DESCRIPTION                              | DATE                |
| <b>A</b>  | INITIAL RELEASE                          | 6/29/10             |
| <b>B</b>  | (CL 1) SEE CHG NOTICE<br>ECN: B0024-0000 | 1/13/11             |



SECTION A-A

- 7. INDICATED ITEM NOT ILLUSTRATED.
- 6. PROCESS SPEC:  
9-5272-28
- 5. PRESS FIT INSULATOR (ITEM #4) INTO INTERMEDIATE CONTACT (ITEM #3) UNTIL FULLY BOTTOMED.
- 4. PRESS FIT INSULATOR (ITEM #2) INTO OUTER CONTACT (ITEM #1) UNTIL FULLY BOTTOMED.
- 3. DRAWING ILLUSTRATES FINAL ASSEMBLY. COMPONENTS ARE SHIPPED UNASSEMBLED IN A RIGID VIAL. COMPLETE INSTALLATION INSTRUCTIONS ARE PACKAGED WITH EACH ASSEMBLY IN A SEALED PLASTIC BAG. IDENTIFICATION LABEL TO CONTAIN THE FOLLOWING:

CONTACT, SOCKET, TWINAX  
T3-47TD08-LD  
AMPHENOL CORPORATION, SIDNEY, N.Y.

- 2. CONTACT MEETS THE APPLICABLE REQUIREMENTS OF MIL-C-39029/91.
- 1. CONTACT DESIGNED TO TERMINATE MI7/176-00002 TWINAX CABLE.

NOTES:

THE USE OF THIS DOCUMENT IS UNLIMITED. HOWEVER, DOCUMENTS REFERENCED HEREON MAY CONTAIN LIMITED RIGHTS DATA.

N/A  
NEXT ASSEMBLY

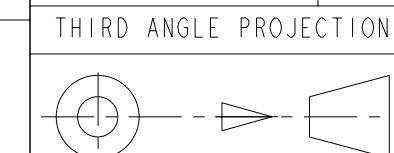
PRO/ENGINEER INFORMATION  
Pro/e Model Used:  
T3-47TD08-LD.ASSEM  
Drawing Name:  
T3-47TD08-LD

UNLESS OTHERWISE SPECIFIED  
SPECIFICATIONS  
LINEAR DIMENSIONS ARE IN INCHES  
TOLERANCES:  
.XXXX = ±.0005 ANGLES= ±2°  
.XXX = ±.010  
.XX = ±.03  
.X = ±.1  
DIM. & TOL. PER ASME Y14.5M;  
DRM PER MIL-DTL-31000;  
OTHER Amphenol Stds. PER 9-3800  
LEGENDS:  
= FLAG NOTE CALL OUT  
REFERENCE ONLY

MATERIAL SPEC.  
N/A  
PROCESS SPEC.  
SEE NOTE 6

| POS | QTY | PART NUMBER     | DESCRIPTION           | NOTE |
|-----|-----|-----------------|-----------------------|------|
| 9   | 1   | PN-1000         | ASSEMBLY INSTRUCTIONS | 7, 3 |
| 8   | 1   | 21-33310-1      | HEAT SHRINK SEAL      | 7    |
| 7   | 1   | T3-46TD08-116BD | CRIMP FERRULE         |      |
| 6   | 1   | P-209546-33     | REAR INSULATOR        |      |
| 5   | 1   | T3-47T08-114LD  | CENTER CONTACT        |      |
| 4   | 1   | T3-47T08-113P   | INNER INSULATOR       | 5    |
| 3   | 1   | T3-47T08-112LD  | INTERMEDIATE CONTACT  | 5    |
| 2   | 1   | T3-47T08-111P   | OUTER INSULATOR       | 4    |
| 1   | 1   | T3-47TD08-110LD | OUTER CONTACT         | 4    |

| APPROVALS                       | DATE      |
|---------------------------------|-----------|
| PREPARED BY: RATCHFORD          | 18-Jun-10 |
| ENGINEER IN CHARGE: RATCHFORD   |           |
| DESIGN MANAGER: SHEPLER         |           |
| DESIGN ACTIVITY GROUP: MIL-AERO |           |



|  |                           |                                     |                  |
|--|---------------------------|-------------------------------------|------------------|
| PARTS LIST   |                           |                                     |                  |
| <b>AMPHENOL CORPORATION</b><br>40-60 DELAWARE AVENUE<br>SIDNEY, N.Y. 13858 |                           |                                     |                  |
| <b>SOCKET CONTACT,<br/>SIZE 8,<br/>CONCENTRIC TWINAX, SHORT</b>            |                           |                                     |                  |
| SIZE<br><b>C</b>   | CAGE CODE<br><b>77820</b> | DOCUMENT NO.<br><b>T3-47TD08-LD</b> | REV.<br><b>B</b> |
| SCALE: 3.0   | REF.<br>T3-47T08-LD       | SHEET 1 OF 1                        |                  |

DOCUMENT NO. T3-47TD08-LD SHEET 1 OF 1 REV. B

RELEASE STATE Released REVISION B VERSION 1

FORMAT: C-U-E-1