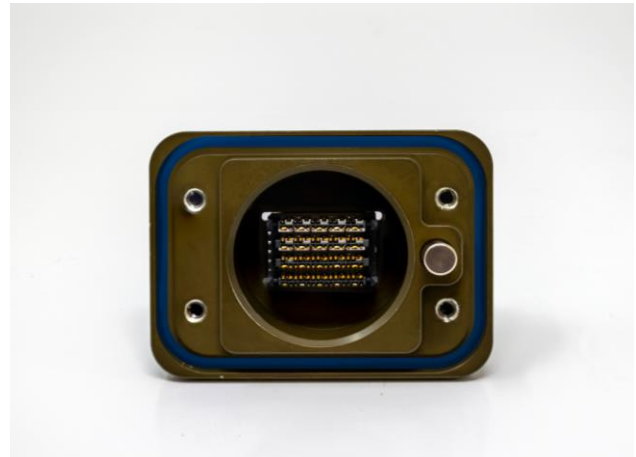


Centaur Blind Mate Rectangular

CENTAUR



Centaur is a high-speed, high density, ruggedized cable assembly

The Centaur, a Greek mythological creature, utilized the advantages of a human upper body and equestrian lower body to flourish. Like the mythological creature, Amphenol's Centaur interconnect utilizes the advantages of our extensive legacy of Mil-Spec connectors and the latest in high-speed contact and connector technology. The Centaur interconnect provides both a durable and high-bandwidth system perfect for military, aerospace, and other ruggedized, high-bandwidth applications. It supports data rates up to 56 Gbps in a ruggedized, lightweight aluminum shell.

FEATURES & BENEFITS:

- Ruggedized light-weight aluminum shell
- Available in 40 or 32 100 ohm differential
- Blind Mate
- Supports data rates up to 56 Gbps PAM4
- Impedance: 100 Ω
- Mating Cycles: 500

MECHANICAL:

- Contact material: Copper Alloy
- Shell material: Aluminum with standard plating options
- Contact plating: Au over 50u Ni

ENVIRONMENTAL:

- -40° C to 85° C operating
- VITA 47 Shock and Vibration

