

DUAL CHANNEL ETHERNET FIBER OPTIC MEDIA CONVERTER

PDS - 344



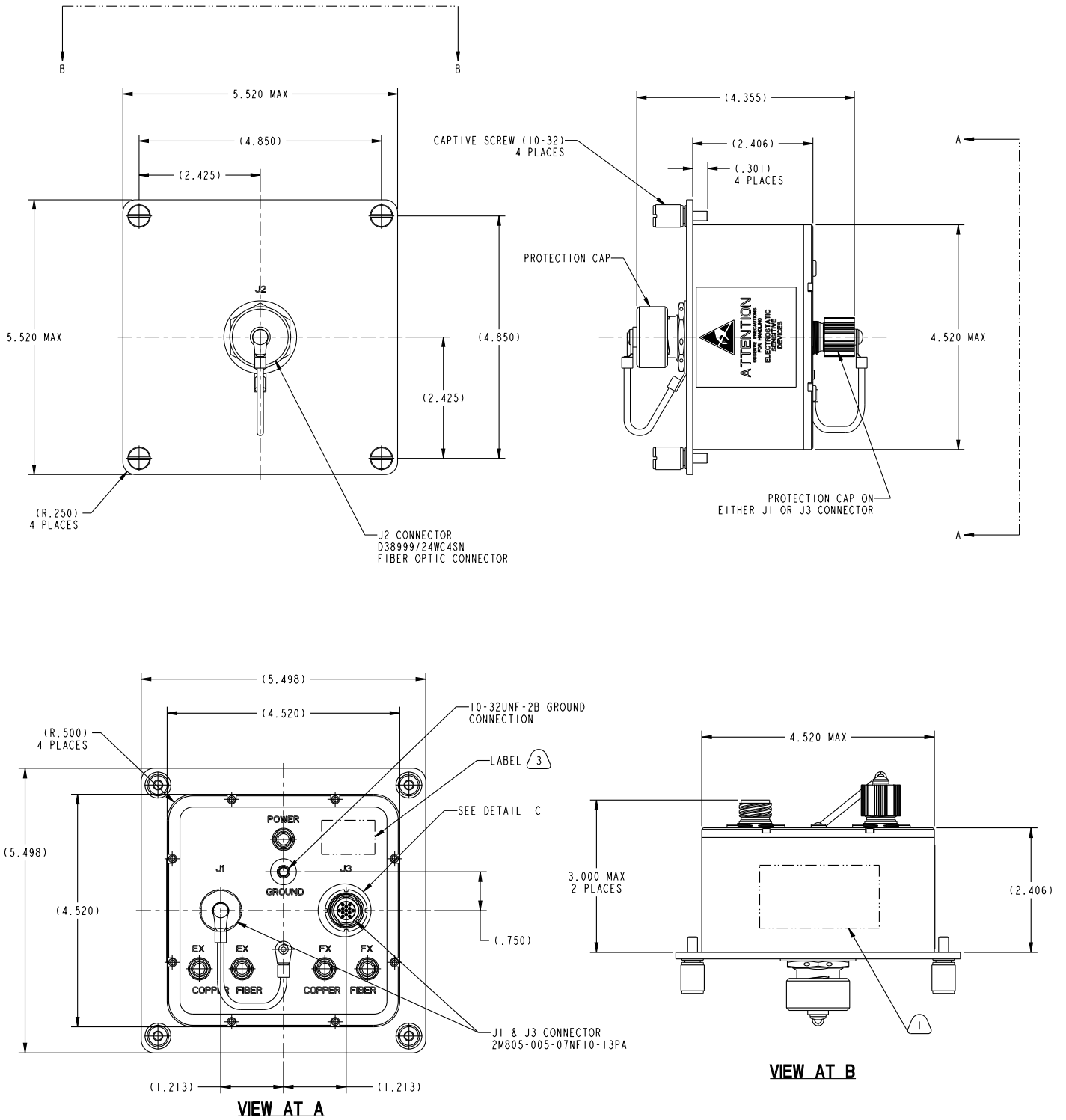
DESCRIPTION

This Dual Channel Media Converter can convert a single channel of 1GBASE-T to 1GBase-EX and a single channel of 16Base-T to 100Base-FX (EX, SX, LX also supported). Utilizing Amphenol's long-time trusted MIL-DTL-38999 and 2M micro-miniature connectors, these converters output to a MIL-DTL-38999 connector embedded with high performance Amphenol contacts. These units can be configured with any plating and shell rotation. These features are a perfect fit for any application being used in harsh environment avionics, ground systems, or naval applications.

FEATURES & BENEFITS

- 1GBASE-T to 1GBase-EX, FX, LX, or SX
- 16BASE-T to 100BASE-EX, FX, LX, or SX
- Stand-alone MIL-STD-704 powered device (28VDC)

CF-020010-60X



PIN-OUT CHARTS

CONNECTOR	PIN	COMMENTS
J1	1	NOT USED
	2	NOT USED
	3	NOT USED
	4	28VDC_RTN
	5	28VDC
	6	LCRM_TR(7) DD-
	7	LCRM_TR(6) DD+
	8	LCRM_TR(5) DC-
	9	LCRM_TR(4) DC+
	10	LCRM_TR(3) DB-
	11	LCRM_TR(2) DB+
	12	LCRM_TR(1) DA-
	13	LCRM_TR(0) DA+
J2	A	TRANS FIBER T+1
	B	REC FIBER R+1
	C	TRANS T+2
	D	REC R+2
J3	1	NOT USED
	2	NOT USED
	3	NOT USED
	4	28VDC_RTN
	5	28VDC
	6	LCRM_TR(7) DD-
	7	LCRM_TR(6) DD+
	8	LCRM_TR(5) DC-
	9	LCRM_TR(4) DC+
	10	LCRM_TR(3) DB-
	11	LCRM_TR(2) DB+
	12	LCRM_TR(1) DA-
	13	LCRM_TR(0) DA+