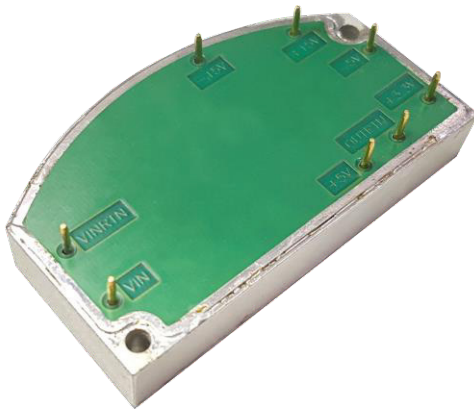


## **M7159 SERIES**

*DC/DC POWER SUPPLY*



### **PRODUCT HIGHLIGHTS**

- **MINIATURE**
- **HIGH DENSITY**
- **FIVE OUTPUTS**
- **DC/DC CONVERTER**
- **UP TO 30W**

## M7159 SERIES DC/DC POWER SUPPLY

### **APPLICATIONS**

Military, Ruggedized, Telecom, Industrial

### **SPECIAL FEATURES**

- Extremely Miniature size
- High efficiency
- Wide input range
- Input / Output isolation
- Fixed switching frequency (400 KHz)
- EMI/RFI filters included
- Indefinite short circuit protection with auto-recovery
- Over-voltage protection -  
Passive tranzorbs on outputs
- Over temperature shutdown with auto-recovery

### **ENVIRONMENTAL**

Meets or exceeds MIL-STD-810D

Temperature:

Operating -40°C to +85°C (baseplate)

Storage -55°C to +125°C

### **RELIABILITY**

150,000 hours, calculated per  
MIL-STD-217F at +85°C baseplate,  
ground fixed.

### **ELECTRICAL SPECIFICATIONS**

#### **DC INPUT**

DC Input range: 28±4 VDC

EMI, RFI Filters included

Efficiency: 75% (Typical)

Isolation:

50V between Input and Output

50V between Input and Case

#### **DC OUTPUT (floating)**

Line/Load regulation:

Less than 1% (no load to full load, -40°C to +85°C)

Ripple and Noise: 50mVp-p, typical (max. 1%)

Current limiting (Hiccup):

Continuous protection for unlimited time

Over voltage protection:

Electronic shutdown with automatic recovery and  
a passive tranzorb on output.

Over temperature protection:

Shutdown at baseplate temperature of +105°C (±5°C)

Automatic recovery at baseplate temperature  
lower than +95°C (±5°C)

Isolation:

50V between Output and Input

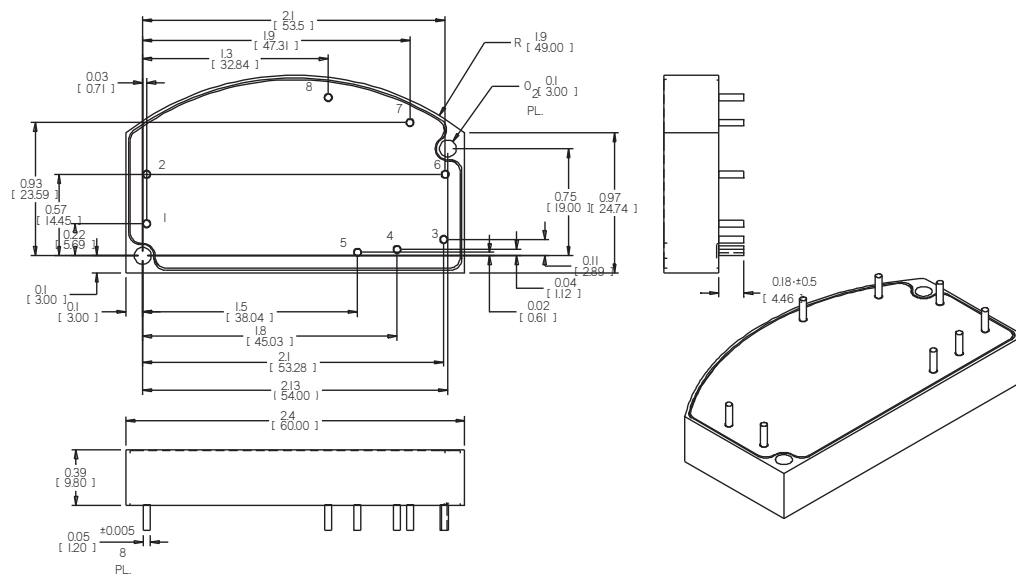
50V between Output and Case

## M7159 SERIES DC/DC POWER SUPPLY

### PIN ASSIGNMENT

PIN No.	PIN Function
1	VIN
2	VIN RTN
3	OUT 1
4	OUT RTN
5	OUT 2
6	OUT 3
7	OUT 4
8	OUT 5

### OUTLINE DRAWING



### Notes

1. Dimensions are in Inches [mm]
2. Tolerance is:  
.XX ±.02 IN  
.XXX ±.01 IN
3. Weight: Approx. 35gr (1.2oz)

\* Specifications are subject to change without prior notice by the manufacturer