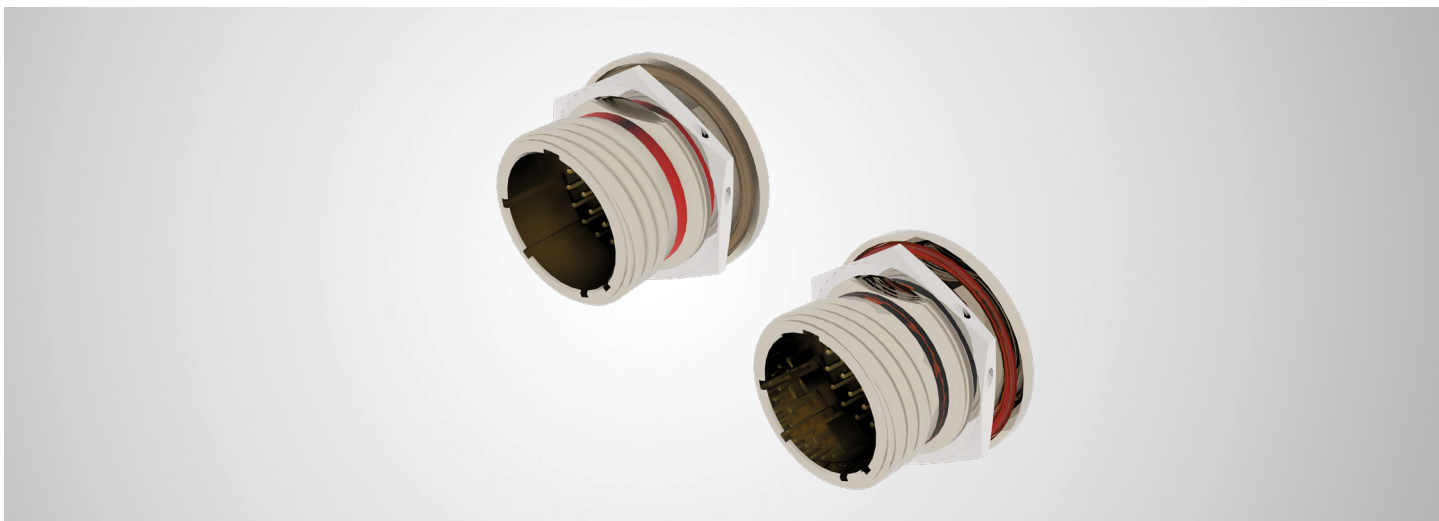


# NIMBUS

## LIGHTWEIGHT HERMETIC PIN AND SOCKET CONNECTORS

PDS - 702



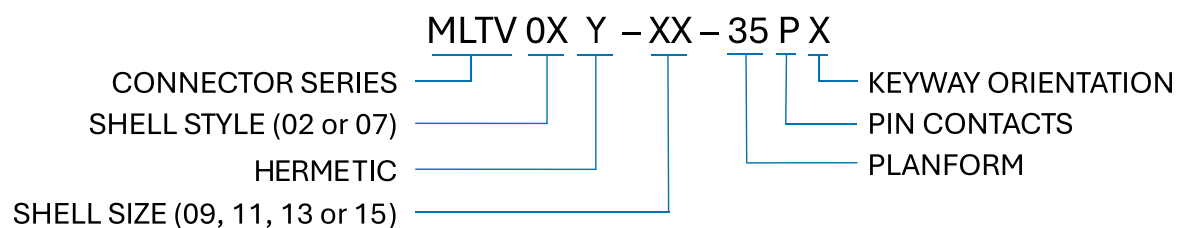
### DESCRIPTION

Engineered for uncompromising performance, our high-reliability hermetic connectors are purpose-built for the most demanding applications where absolute integrity is non-negotiable. Nimbus Aluminum connectors deliver up to 30% weight reduction compared to traditional stainless-steel designs—offering unmatched reliability, efficiency, and performance for critical Aerospace, Defense, EVTOL, and Space systems.

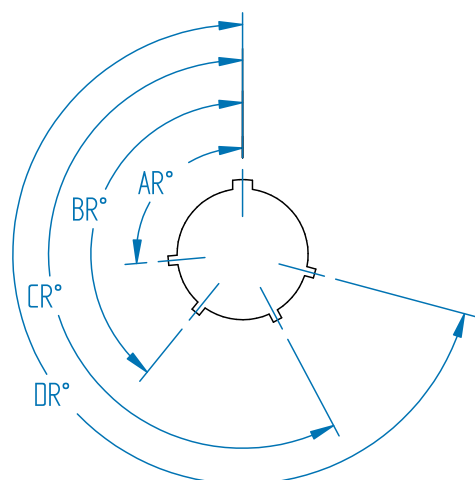
### FEATURES & BENEFITS:

- Up to 30% lighter than Stainless Steel
- Proprietary pin and socket contact receptacles derived from MIL-DTL-38999 Series III (NON-QPL)
- Solder cup contacts available
- Coupling method – Anti vibration Tri Start Triple Thread
- Box mount and bulkhead mount available
- Operating temperature -55°C to 125°C
- Hermetically sealed receptacle ensures complete component protection
- Design Standard: MIL-DTL-38999 Series III (NON-QPL)
- Platform arrangement derived from MIL-DTL-38999: 09-35, 11-35, 13-35, 15-35
- Contact sizes: MIL-DTL-38999 (Size 22)
- Shell Material: Aluminum Alloy
- Insulation: Glass
- Contact Material: Beryllium Copper
- Contact Plating: Hard gold plate 1.25-5.0µm with semi-bright nickel underplate 5.0-10µm
- Shell Material: Aluminum 6061 T6
- Shell Finish: Electroplated nickel 5.0-10µm
- Leak rate:  $<1 \times 10^{-7}$  cc/sec (He)
- Maximum Temperature: 125°C
- Insulation resistance:  $>5000$  M Ohm @ 500 Vdc @ambient (reduced @ temperature)

## TECHNICAL DRAWINGS:



Receptacle - Front face



MLTV02

