

INSTALLATION INSTRUCTIONS FOR ASSEMBLING SLOTTED SPACERS ON AMPHENOL® NZGL PLUG SHELL CONNECTORS

FOR ASSEMBLING SLOTTED SPACERS TO NON-EMI SHIELDED AMPHENOL® CONNECTORS (Size 1515 Illustrated)

1. Unscrew the backshell cable support nut to release the cable from backshell.
2. Unscrew the backshell accessory coupling nut from the rear of the plug shell to gain sufficient clearance between the backshell coupling nut and the plug shell serrations to install the slotted spacer.

3. Ease the opening in the slotted spacer around all the wires in the bundle, being careful not to pull on contacts or damage wire insulation.
4. Center the slotted spacer over the serrations and threads and then slide the slotted spacer forward into position behind the retaining snap ring as illustrated in Figure 3 (sizes 1511 and 1513) or as illustrated in Figure 4 (size 1515).
5. Reassemble and re-torque backshell to the required specifications.
6. Perform bench level acceptance test as required.

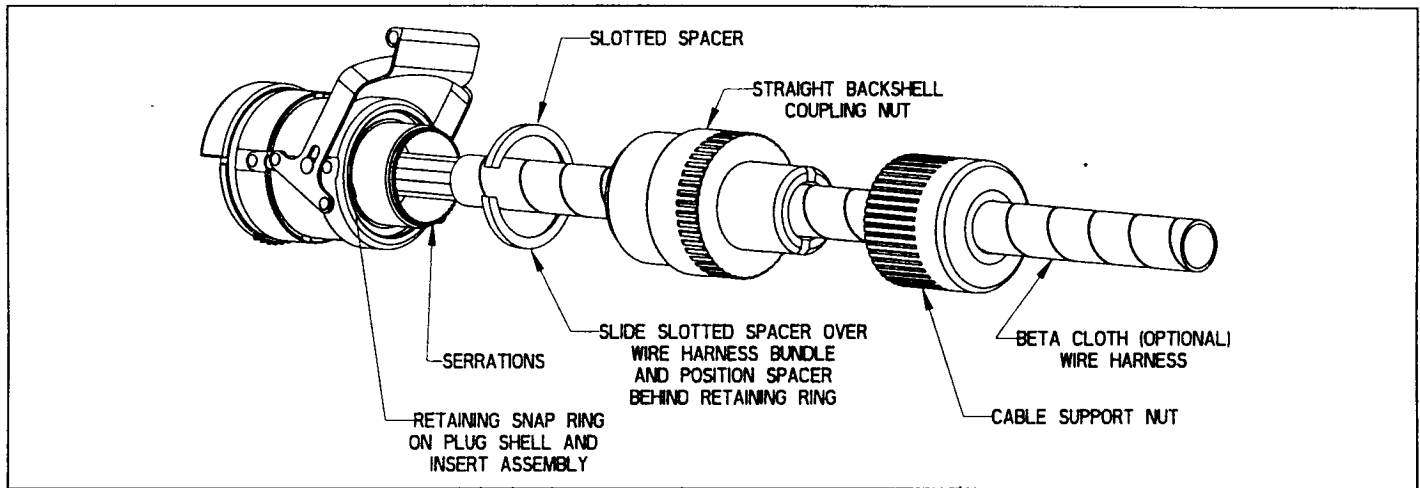


FIGURE 1

FOR ASSEMBLING SLOTTED SPACERS TO EMI/RFI SHIELDED AMPHENOL® CONNECTORS (Size 1515 Illustrated)

1. Unscrew the backshell cable support nut to release the cable from backshell.
2. Unscrew the backshell rear adapter from the EMI/RFI shield adapter and accessory body.
3. Remove shield clamp band which secures the "2SJ" shields and release shield from EMI adapter.
4. Unscrew backshell accessory coupling nut from connector plug shell and insert assembly.

5. Ease the opening of the slotted spacer around all the wires/shields, protecting wires as required, so as not to damage wire insulation or damage the contacts.
6. Center the slotted spacer over the serrations and threads and then slide the slotted spacer forward into position behind the retaining snap ring as illustrated in Figure 3 (sizes 1511 and 1513) or as illustrated in Figure 4 (size 1515).
7. Reassemble backshell components, and torque to required torque values.
8. Perform bench level wire harness assembly acceptance test, as required.

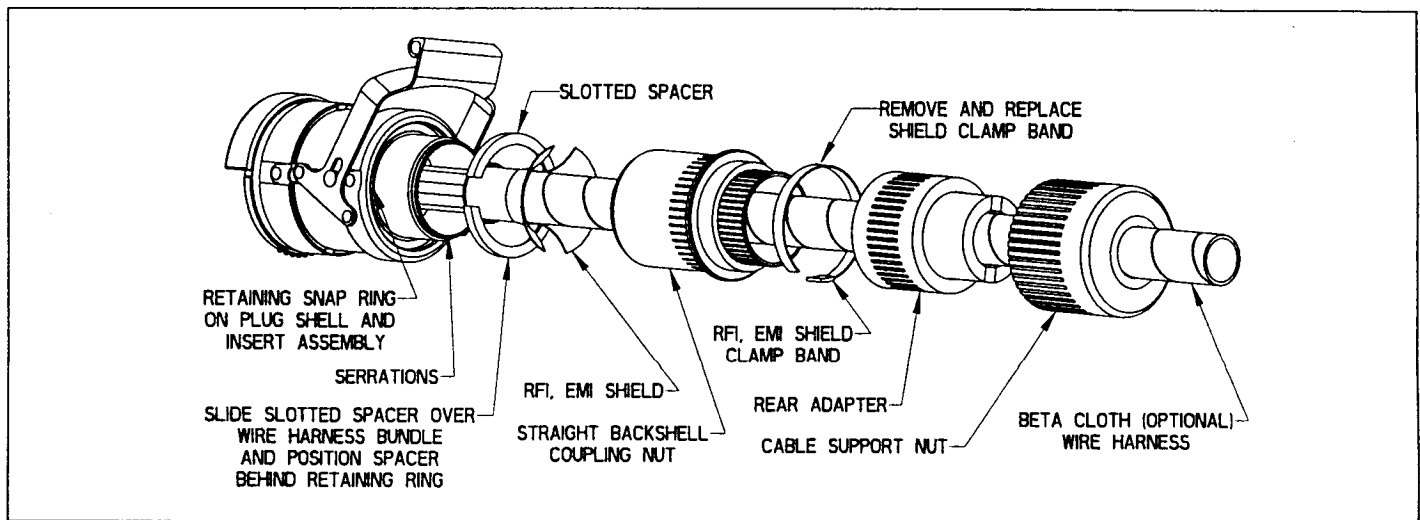


FIGURE 2

INSTALLATION INSTRUCTIONS FOR ASSEMBLING SLOTTED SPACERS ON AMPHENOL® NZGL PLUG SHELL CONNECTORS, CONT.

FOR ASSEMBLING SLOTTED SPACERS TO UNWIRED AMPHENOL® CONNECTORS

1. Prior to loading wired contacts into the NZGL plug shell, the slotted spacer must be placed over the rear serrations and threads and pushed forward as illustrated in Figure 3 (sizes 1511 and 1513) or as illustrated in Figure 4 (size 1515).
2. Assemble wired contacts.
3. Assemble backshell.

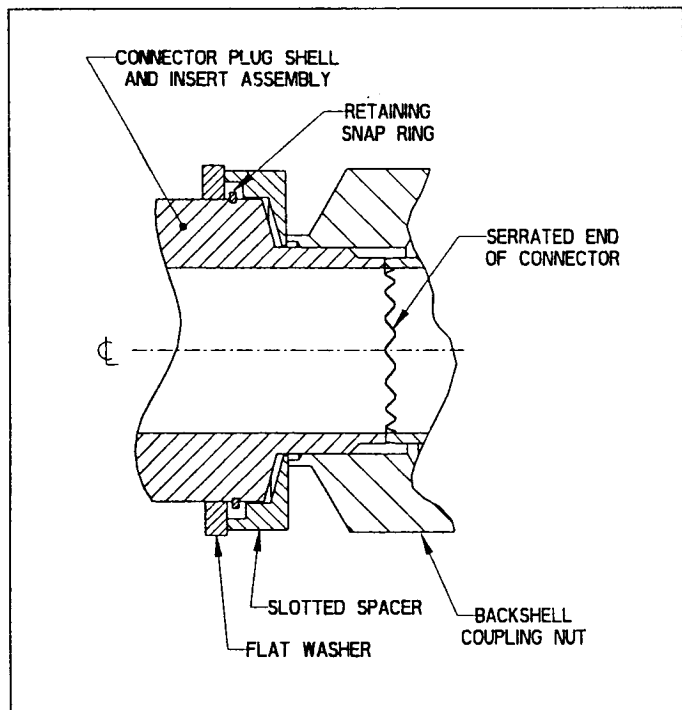


FIGURE 3
For 1511 and 1513 Shell Size Connectors

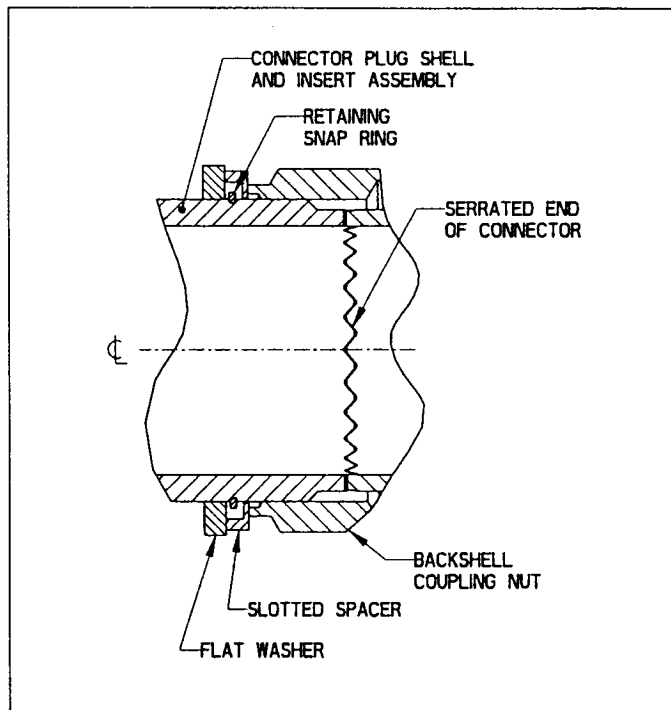


FIGURE 4
For 1515 Shell Size Connectors

For more information contact:
Amphenol Corporation
Amphenol Aerospace
40-60 Delaware Ave.
Sidney, New York 13838-1395
Phone: 607-563-5011