

**Installation Instructions
(General Insertion and Removal)
for Quadrax and Differential Twinax
Contacts**

Contact/Cable Insertion into Connector

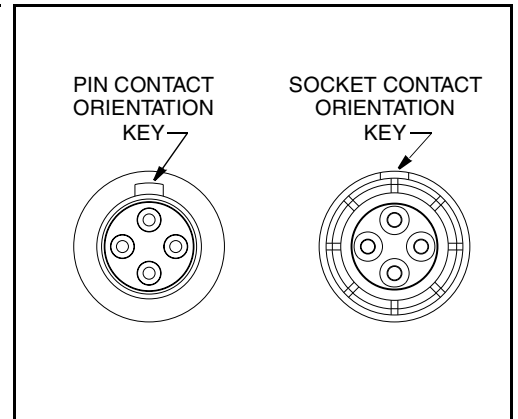
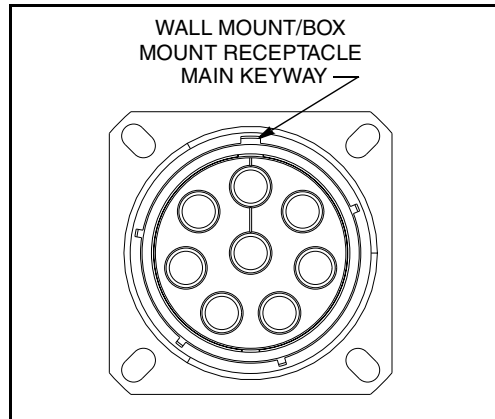
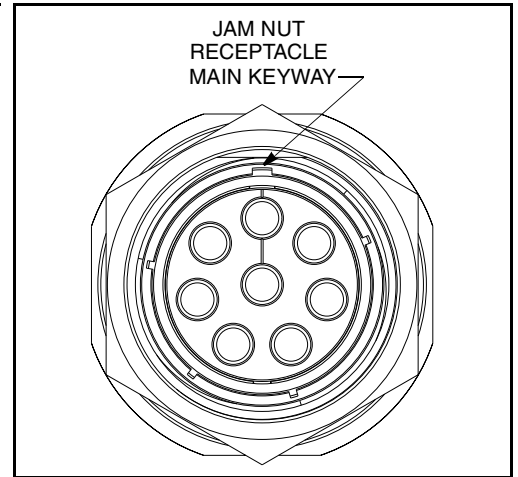
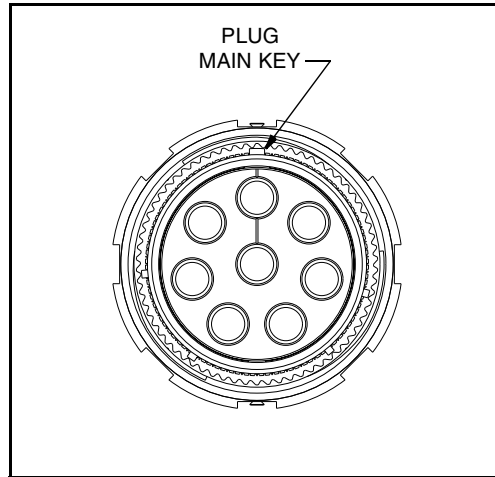
Contacts are inserted by hand. Insert the contact assembly into the proper rear grommet hole. Contact must be aligned with hole and not inserted at an angle.

STEP 1

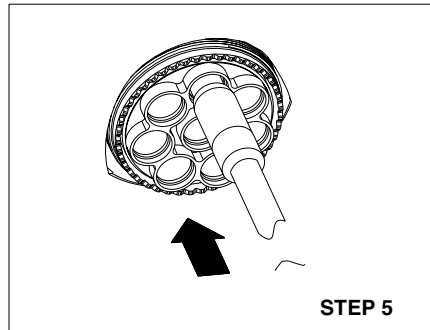
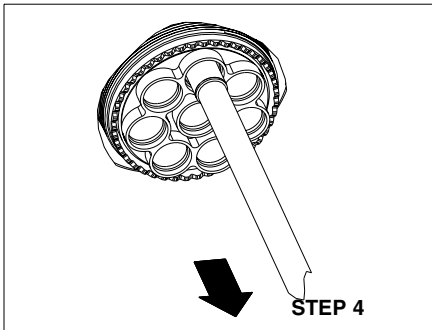
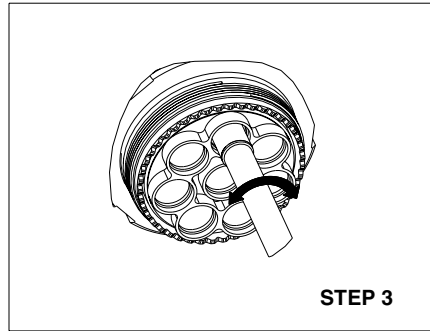
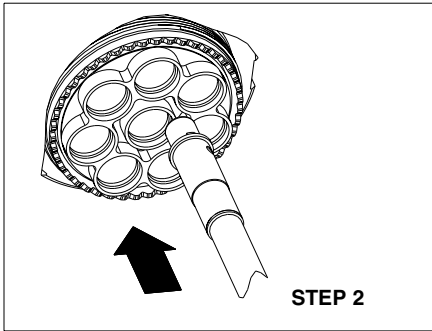
The contact's orientation key must be in vertical alignment with the connector's main key or keyway (holding contact key and connector key/keyway at "12 o'clock" orientation position is recommended).

Continued on back of sheet.

STEP 1



**Installation Instructions (General Insertion and Removal)
for Quadrax and Differential Twinax Contacts, cont.**



STEP 2

Push forward until contact is felt to snap into position within the insert.

STEP 3

Contact may need to be slightly rotated to properly align contact orientation key with connector insert keyway.

STEP 4

Gently tug on cable to assure retention.

STEP 5

Slide piggyback grommet seal into position inside the connector grommet and over the crimped end of the contact.

Contact/Cable Removal from Connector

Remove piggyback grommet seal from the connector grommet. Position removal tool part number MIL-I-81969/14-06, Daniels DRK-264-8, around cable and slide tool toward connector until tool tips enter rear grommet and comes to a positive stop on the contact. Grip cable and simultaneously remove tool, contact and cable.

Amphenol

Amphenol Aerospace
40-60 Delaware Avenue
Sidney, New York 13838-1395
Website: www.amphenol-aerospace.com