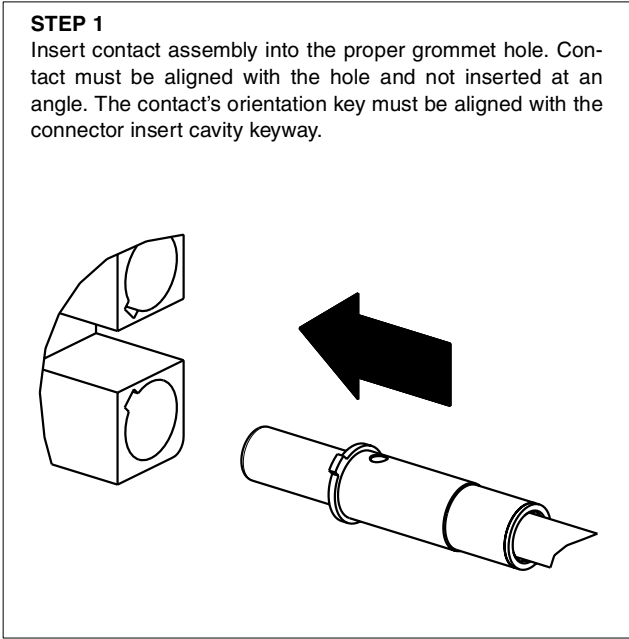


**Installation Instructions (General Insertion and Removal)
for Quadrax Contact Assembly with sealing and
alignment boot. For ARINC Connectors.**

Contact/Cable Insertion into Connector
Contacts are to be inserted by hand.

STEP 1

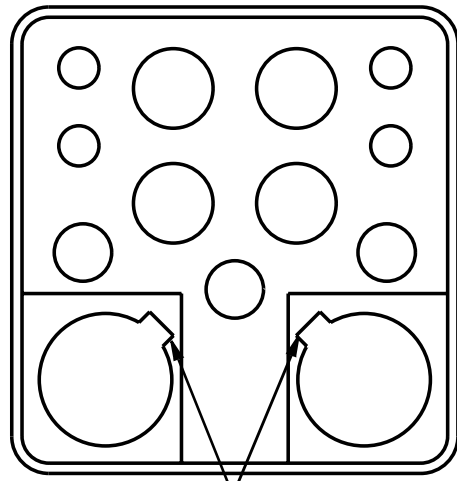
Insert contact assembly into the proper grommet hole. Contact must be aligned with the hole and not inserted at an angle. The contact's orientation key must be aligned with the connector insert cavity keyway.



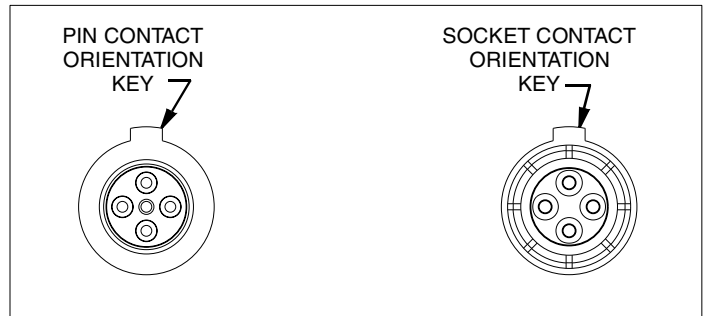
Continued on back of sheet.

L-2122-B
October 2004

FSCM77820



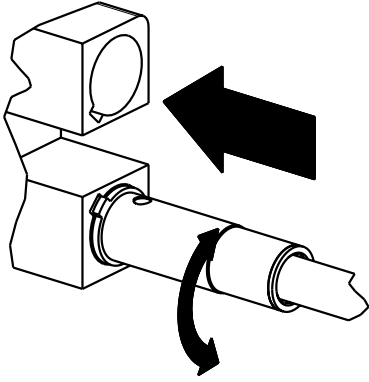
ARINC CONNECTOR INSERT
CAVITY KEYWAYS



Installation Instructions (General Insertion and Removal) for Quadrax Contact Assembly with sealing and alignment boot. For ARINC Connectors. Cont.

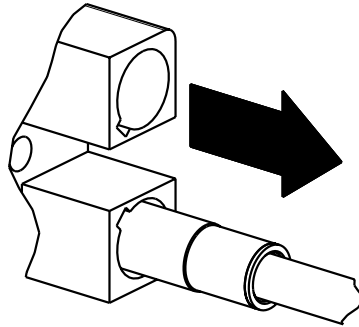
STEP 2

Contact may need to be slightly rotated to properly align contact orientation key with connector insert cavity keyway. Push forward until contact is felt to snap into position within the insert.



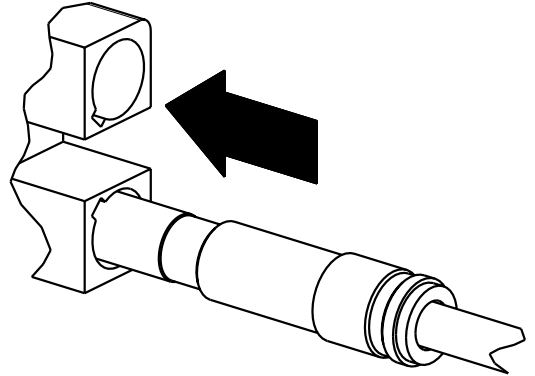
STEP 3

Gently tug on cable to assure retention.



STEP 4

Gently slide sealing and alignment boot into position inside the grommet until boot bottoms on rear of insert.



Contact Removal from Connector

Remove sealing and alignment boot from connector. Position removal tool, part number 485-952, around cable and slide tool toward connector until tool tip comes to a positive stop on contact. Grip cable and simultaneously remove tool, contact and cable.

Amphenol

Amphenol Aerospace
40-60 Delaware Avenue
Sidney, New York 13838-1395
Website: www.amphenol-aerospace.com