

**Installation Instructions (General Insertion and Removal) for
Quadrx Contact Assembly for Amphenol Canada Rack and
Panel Connectors.**

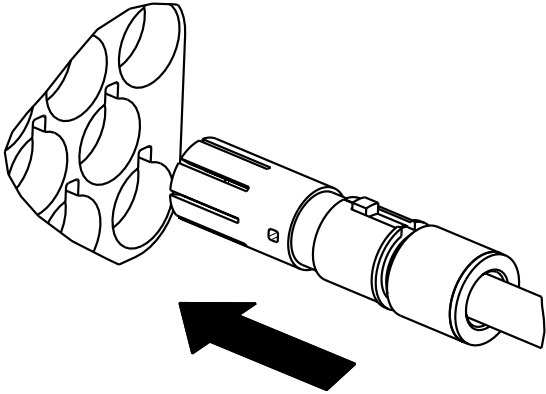
Connector part numbers: 465-8214-1
465-8214-2
465-8214-3
465-8214-4

Contact/Cable Insertion into Connector

Contacts are to be inserted by hand.

STEP 1

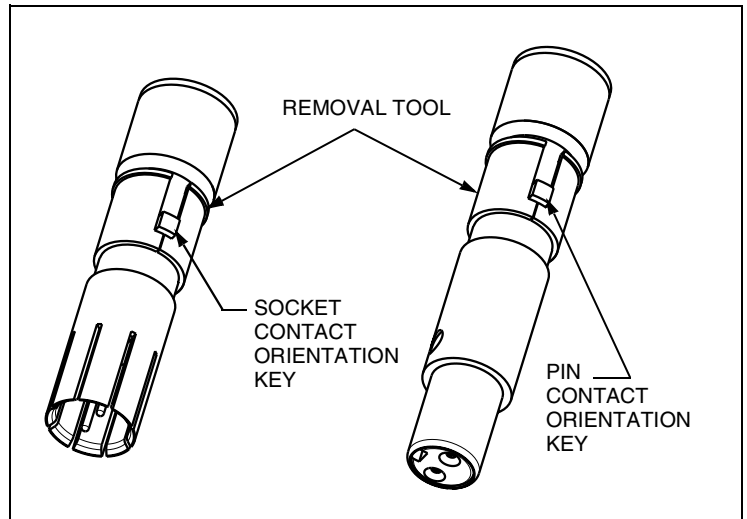
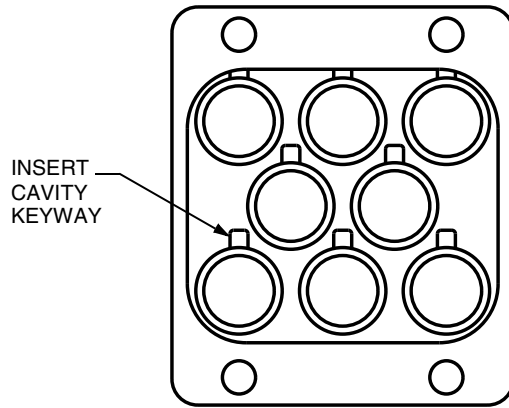
Insert contact assembly into the proper insert hole and not inserted at an angle. The contact's orientation key must be aligned with the connector insert cavity keyway.



Continued on back of sheet.

L-2122-C
February 2005

FSCM77820

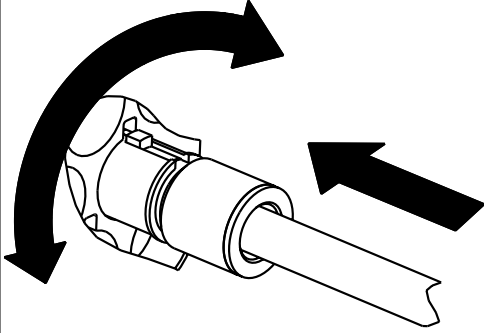


**Installation Instructions (General Insertion and Removal) for
Quadrax Contact Assembly for Amphenol Canada Rack and
Panel Connectors.**

Connector part numbers: 465-8214-1
465-8214-2
465-8214-3
465-8214-4

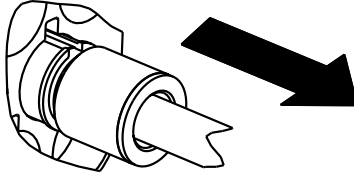
STEP 2

Contact may need to be slightly rotated to properly align contact orientation key with connector insert cavity keyway. Push forward until contact is felt to snap into position within the insert.



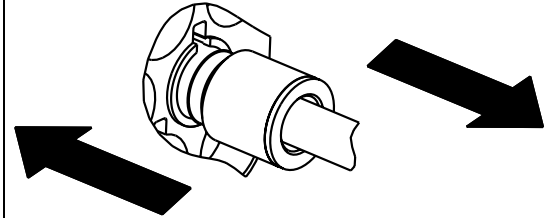
STEP 3

Gently tug on cable to assure retention.



Contact Removal from Connector

Slide integrated removal tool forward until it can't move any longer. With the tool forward, grip cable and pull it free of the connector.



Amphenol

Amphenol Aerospace
40-60 Delaware Avenue
Sidney, New York 13838-1395
Website: www.amphenol-aerospace.com